

User's Manual

Key Safe Box 63340

toboli



Illustration similar, may vary depending on model

Please read and follow the operating instructions and safety information prior to initial operation.

Technical changes reserved!

Illustrations, functional steps, and technical data may deviate insignificantly due to continuous further developments.



The information contained in this document may alter at any time without prior notice. No part of this document may be copied or otherwise duplicated without prior written consent. All rights reserved. WilTec Wildanger Technik GmbH cannot be held liable for any possible mistakes in this operating manual, nor in the diagrams and illustrations shown.

Although WilTec Wildanger Technik GmbH has made every possible effort to ensure that this operating manual is complete, accurate, and up-to-date, errors cannot be ruled out entirely.

If you have found an error or wish to suggest an improvement, we look forward to hearing from you. Send us an e-mail to:

service@wiltec.info

or use our contact form:

<https://www.wiltec.de/contacts/>

The most recent version of this manual in several languages can be found in our online shop:

<https://www.wiltec.de/docsearch>

Our postal address is:

WilTec Wildanger Technik GmbH
Königsbenden 12
52249 Eschweiler – Germany

To return your goods for exchange, repair, or other purposes, please use the following address. Attention! To allow for a trouble-free complaint or return, it is important to contact our customer service team before returning your goods.

Retourenabteilung
WilTec Wildanger Technik GmbH
Königsbenden 28
52249 Eschweiler – Germany

E-mail: **service@wiltec.info**

Tel: +49 2403 55592-0

Fax: +49 2403 55592-15

Introduction

Thank you for choosing to purchase this quality product. To minimise the risk of injury, we ask you to always take some basic safety precautions when using this product. Please read this operating manual carefully and make sure that you understand it. Keep these operation instructions in a safe place.

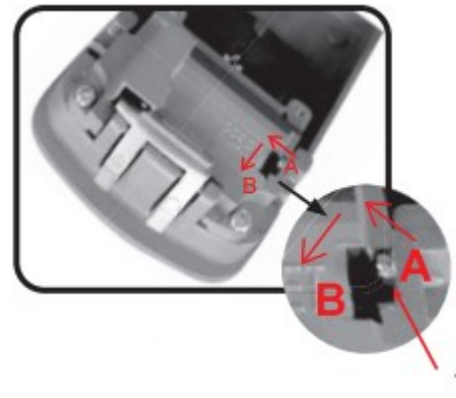
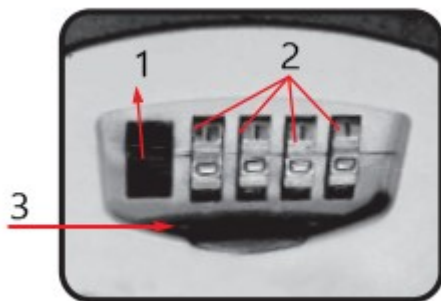
Attention! First read the complete user's manual to know how to set the code and mount the safe box to a wall.

Opening the safe box

1. Slide the lock downwards to expose the number dials.
2. Spin the dials to obtain the correct combination (factory-set code: 0-0-0-0).
3. To open the safe box, push the knob 1 downwards.
4. To close the safe box, first change the dials so that no one can see the correct code.
5. Close the lock.

Adjusting the code

1. Open the safe box (factory-set code: 0-0-0-0).
2. Set the reset knob from the "A" to the "B" position.
3. Spin the dials to obtain the desired combination.
4. Re-set the reset knob from the "B" to the "A" position.
5. The new code is now set.



No	Name	No	Name
1	Knob 1	1	Reset knob
2	Number dials		
3	Lock		

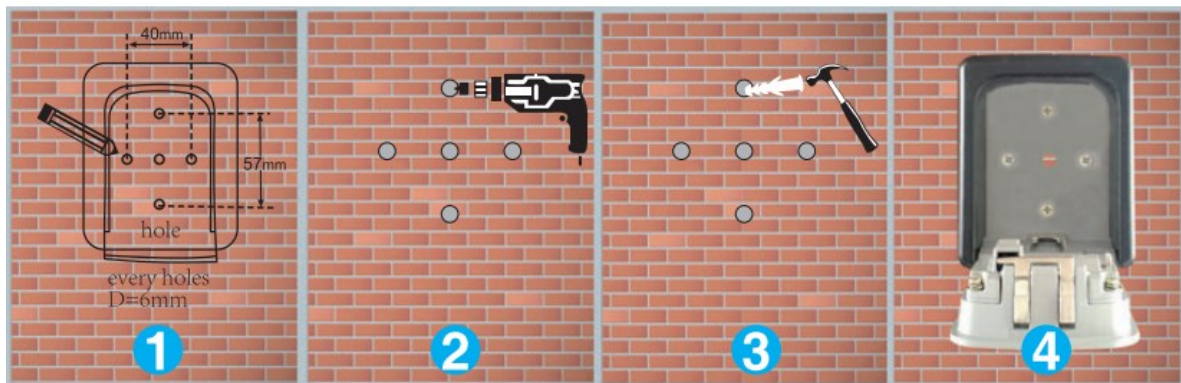
Important instructions!

1. Keep the lock closed to prevent the rain from entering.
2. It is advisable that you spin the dials regularly to allow them to keep their readiness.

Mounting instructions

There are 5 mounting holes inside the safe box.

1. Hold the safe box to the spot where you wish to mount it, then mark the holes to be drilled through the mounting holes with the help of a pencil.
2. Lay the safe box aside, then use an appropriate drill (\varnothing 6 mm) to drill the holes at the spots marked.
3. Set plastic rawlplugs (those for brickwork) into the holes that you have drilled.
4. Hold the safe box to the mounting spot and screw it there.



Important Note:

Reproduction and any commercial use (of parts) of this operating manual, requires a written permission of WilTec Wildanger Technik GmbH.