

Operation Manual

Hydraulic Jack

63371



Illustration similar, may vary depending on model

Read and follow the operating instructions and safety information before using for the first time.

Technical changes reserved!

Due to further developments, illustrations, functioning steps, and technical data can differ insignificantly.

Updating the documentation

If you have suggestions for improvement or have found any irregularities, please contact us.



The information contained in this document may alter at any time without prior notice. No part of this document may be copied or otherwise duplicated without prior written consent. All rights reserved. WilTec Wildanger Technik GmbH cannot be held liable for any possible mistakes in this operating manual, nor in the diagrams and illustrations shown.

Although WilTec Wildanger Technik GmbH has made every possible effort to ensure that this operating manual is complete, accurate, and up-to-date, errors cannot be ruled out entirely.

If you have found an error or wish to suggest an improvement, we look forward to hearing from you. Send us an e-mail to:

service@wiltec.info

or use our contact form:

<https://www.wiltec.de/contacts/>

The most recent version of this manual in several languages can be found in our online shop:

<https://www.wiltec.de/docsearch>

Our postal address is:

WilTec Wildanger Technik GmbH
Königsbenden 12
52249 Eschweiler
Germany

To return your goods for exchange, repair, or other purposes, please use the following address. Attention! To allow for a trouble-free complaint or return, it is important to contact our customer service team before returning your goods.

Returns Department
WilTec Wildanger Technik GmbH
Königsbenden 28
52249 Eschweiler

E-mail: **service@wiltec.info**
Tel: +49 2403 55592-0
Fax: +49 2403 55592-15

Introduction

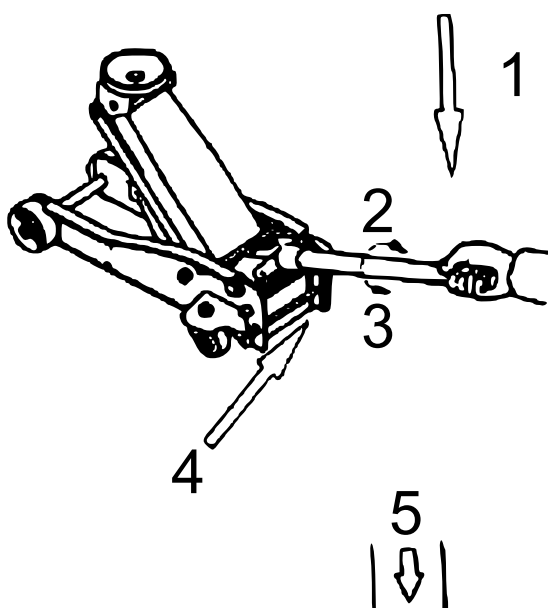
Thank you for choosing to purchase this quality product. To minimise the risk of injury, we ask you to always take some basic safety precautions when using this product. Please read this operating manual carefully and make sure that you understand it. Keep these operation instructions in a safe place.

Safety instructions

- There are hazards associated with the use of a jack. To avoid the risk of personal injury or property damage, make sure you fully understand the operating instructions for this product and the recommendations in the vehicle owner's manual for jacking up your vehicle before lifting the vehicle.
- Do not exceed the maximum load capacity of this jack.
- This jack is intended for use in motor vehicles only.
- Note that large or heavy vehicles may exceed the specified capacity of the jack. Check the vehicle's operating instructions or contact the vehicle manufacturer.
- Do not use for any purpose other than lifting and lowering vehicles.
- Never use to lift a structure or building.
- Do not lift people, stand on the jack, or ride on it.

Assembling the handle

- Insert the lower handle piece into the middle handle piece and finally into the upper handle piece, making sure that the holes for the retaining clips line up.
- Place the jack on the wheels on a flat surface and slide the assembled handle into the handle base.
- Rotate until the square-shaped hole slides over the shaft in the handle base.
- Double check that the handle is seated properly by finger pressure.
- Loosen the handle 1/2 turn so it should rotate easily.
- On the back of the jack, a large metal clamp holds the base of the handle flat against the jack. Hold the handle in a compressed position and carefully remove the clip by pulling it out. Release the pressure on the base of the handle.



Nr.	Descriptions
1	To operate the release valve
2	Close
3	Open
4	To operate the jack, insert the handle end into the handle base and pump the jack handle to lift the load.
5	Load



Checking the handle function

Test the operation of the jack briefly as follows before using it to lift loads:

1. Turn the handle to close or open the valve that raises and lowers the jack.
2. To raise the jack, turn the handle fully clockwise until it stops. Do not force or tighten at this point.
3. Raise the jack about halfway by pumping the handle several times. If the jack does not raise after a few pumps, check to make sure that the handle is properly inserted into the handle base and seated on the hex shaft.
4. With the jack raised, slowly turn the handle counter-clockwise to lower the jack. A normal hissing sound can be heard when lowering the jack and releasing the pressure in the hydraulic cylinder.

Preparing the work area

Before using a jack to lift a vehicle, you must prepare the work area accordingly. Follow this procedure each time the jack is used to prevent property damage and serious injury.

1. Thoroughly inspect the jack for damage or wear before each use. Test the operation of the unloaded jack briefly before using it to lift a load. If the jack is damaged or malfunctions, do not lift a load until the problem is corrected.
2. Before lifting the vehicle, consult the vehicle manufacturer's operating instructions. There you will find information on safety precautions, jacking procedures, weight of the vehicle, recommended type of jack, and location of jack support surfaces on the vehicle. The permissible load capacity of the jack is 3000 kg. **Never exceed the permissible load capacity of the jack.**
3. Keep children and other persons out of the work area before moving or lifting the vehicle. Another adult should be nearby for added safety and support, but must stay away from the vehicle while it is being moved or lifted. No one should be in a vehicle that is being lifted. No person should enter a vehicle that is being lifted with a jack or vehicle support. No person should lean into a vehicle that is being supported with a jack or vehicle jack stands.
4. No person should physically go under a vehicle that is supported with a hydraulic jack.
5. Remove obstacles from the work area. Working in narrow or unclear work areas is dangerous.
6. The hydraulic jack should only be used for lifting and lowering, the lifted vehicle should be supported with jack stands.
7. Make sure that the jack and vehicle are on a firm, level surface, such as a paved or concrete driveway or garage floor. The hydraulic jack should be used on a hard, level surface and should roll freely when being raised and lowered. Uneven or sloped surfaces create dangerous working conditions and will affect the function of the jack.
8. Apply the vehicle's parking brake or emergency brake and place the shift lever in park mode (lowest gear for manual transmissions). Turn off the vehicle's ignition and place it in the "lock" position, making sure that the steering wheel is engaged.
9. Chocks should be placed on the wheels of the vehicle that are not raised. Do not rely on the vehicle's transmission or brakes to hold it in place. Block all vehicle wheels un-raised to prevent the vehicle from rolling away. Use wedge-shaped blocks that the tires cannot roll over and place a wedge firmly against both sides of the tire to prevent rolling forward as well as backward.
10. The load should be centred on the head plate. Loads un-centred can be unstable.
11. The hydraulic jack should be used only for raising and lowering; the raised vehicle should be supported with jack stands. Jack stands (not included) are required to support the vehicle once it is raised. Have jack stands capable of supporting the weight of the vehicle available for use. Read the jack manufacturer's instructions and safety information carefully and familiarise yourself with their use.
12. Plan the location of the jack under the vehicle and make sure that the jack rests only on a support surface of the vehicle. Consult the vehicle manufacturer's manual for the location of jack support surfaces.



Lifting the vehicle

Lifting a vehicle with a jack can be dangerous. Follow all instructions and precautions below. Do not lift a vehicle with the engine running nor start a vehicle supported by a jack or jack stands.

1. With the jack arm fully lowered, roll the jack to the position below the jack rest.
2. Turn the jack handle fully clockwise. Slowly inflate the handle until the jack head just begins to contact the support surface on the underside of the vehicle.
3. Check the position of the jack head under the support area and make sure that it is centred and extends properly into the support area.
4. Continue pumping the handle until the vehicle is raised to the desired height. Watch the position of the jack head, as the vehicle is raised, to ensure that the support area does not slip or detach from the jack head.
5. Place jack stands under the additional support area.
6. Turn the jack handle slowly counter-clockwise to place the vehicle on the jack stands.

Working on the vehicle

- Any vehicle supported by a jack or jack stands is a potentially hazardous work environment.
- Do not move or roll a jack when it is supporting a vehicle.
- Never place any part of your body under a vehicle supported by a jack.
- Be aware of forces acting on the vehicle, such as the torque of a nut or bolt. These forces can cause the vehicle to become unstable on the jack or jack stands if they are not properly placed.
- Do not operate the ignition of the vehicle or attempt to start a vehicle that is supported by a jack or jack stands.

Lowering the vehicle

Make sure that there are no persons or objects under the vehicle before lowering it!

1. Place the jack back under the same support surface that you used when lifting the vehicle.
2. Turn the handle fully clockwise. Pump the handle until the jack head touches the support surface under the vehicle.
3. Make sure that the jack head is centred under the support surface. Slowly lift the vehicle off the jack stands with the handle.
4. Remove the jack stands, take them out of the vehicle area, and put them aside.
5. Hold the jack handle and slowly turn it counter-clockwise until the jack begins to lower.
6. Check the speed of the vehicle being lowered carefully. Lowering the vehicle too quickly can cause property damage or injury.

Maintenance and storage

Lubricate

All moving parts of the jack should be lubricated every month with a general-purpose grease to ensure efficient operation. Grease the joints on the lift arm hinges, the push rods, the base of the handle, the rear, front rollers, etc. The pivot point of the lift arm must be well lubricated, otherwise the jack will make a creaking noise under heavy load.

Maintaining the oil level

Important! Always use SAE 10 hydraulic oil for jacks when refilling or replacing oil. Avoid mixing oil types. Do not use brake fluid, alcohol, glycerine, detergent, engine oil, or contaminated oil. Unsuitable oil can cause severe internal damage to the jack.



Adding oil

Make sure that the jack is on a level ground and with the head fully lowered, remove the breather valve. The oil level should be visible at the breather valve opening approximately 12 mm below the valve opening. Do not overfill! If the oil level is low, top up as required and close the breather valve.

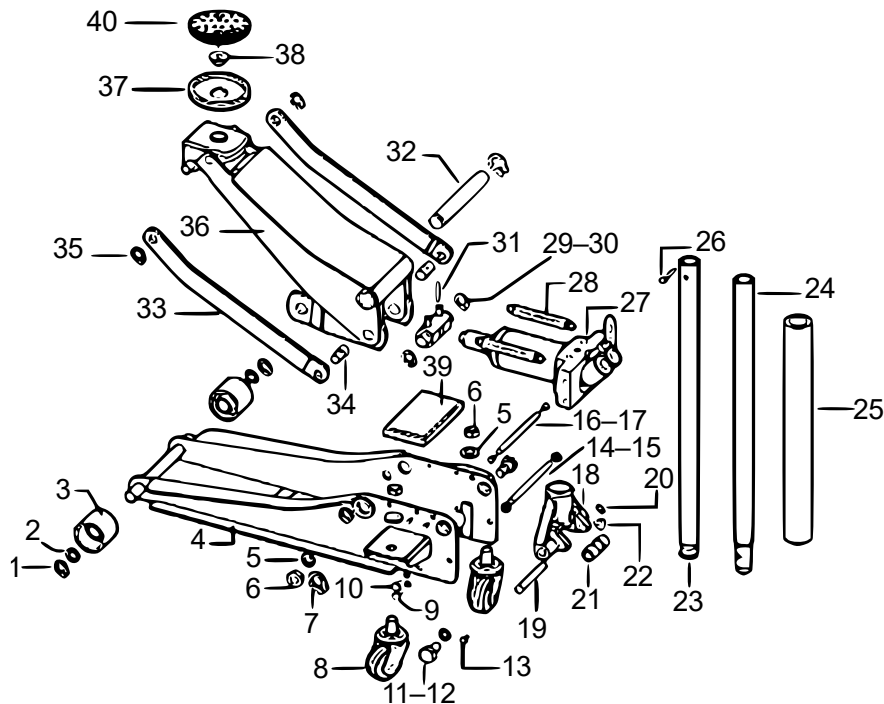
Cleaning

The jack should only be wiped with a soft cloth. Do not use gasoline, solvents, or abrasive cleaners, as these may damage the hydraulic seals.

Storage

Before storing, turn the handle counter-clockwise 1½ turns to release pressure in the hydraulic cylinder. Leave the handle in this position. Store the jack on a flat surface, in a clean and dry environment, preferably indoors. Make sure that the jack is protected from moisture.

Exploded view and parts list



No	Name	No	Name
1	C-ring	21	Gear shaft
2	Flat washer	22	Lock bolt
3	Front wheel	23	Lower handle
4	Frame unit	24	Upper handle
5	Spring washer	25	Middle handle
6	Nut M16	26	Bolt
7	C-ring	27	Power unit
8	Rear wheel set	28	Retaining spring
9	Bolt	29	C-ring
10	Spring washer	30	Piston rod axis
11	Bolt	31	Cotter pin
12	Spring washer bolt	32	Lifting arm shaft
13	Screw M8	33	Link rod
14	Link shaft	34	Bolt
15	Nut M8	35	C-ring
16	Link shaft	36	Lifting arm
17	Nut M8	37	Saddle
18	Handle base	38	Saddle bolt (M24 thread)
19	Shaft	39	Cover
20	C-ring	40	Head plate

Important Note: Reproduction and any commercial use (of parts) of this operating manual, requires a written permission of WilTec Wildanger Technik GmbH.