

User's manual

Foam Cutter 450° 63407



Illustration similar, may vary depending on model

Read and follow the operating instructions and safety information before using for the first time.

Technical changes reserved!

Illustrations, functional steps, and technical data may deviate insignificantly due to continuous further developments.

Updating the documentation

If you have suggestions for improvement or have found any irregularities, please contact us.



The information contained in this document may alter at any time without prior notice. No part of this document may be copied or otherwise duplicated without prior written consent. All rights reserved. WilTec Wildanger Technik GmbH cannot be held liable for any possible mistakes in this operating manual, nor in the diagrams and illustrations shown.

Although WilTec Wildanger Technik GmbH has made every possible effort to ensure that this operating manual is complete, accurate, and up-to-date, errors cannot be ruled out entirely.

If you have found an error or wish to suggest an improvement, we look forward to hearing from you. Send us an e-mail to:

service@wiltec.info

or use our contact form:

<https://www.wiltec.de/contacts/>

The most recent version of this manual in several languages can be found in our online shop:

<https://www.wiltec.de/docsearch>

Our postal address is:

WilTec Wildanger Technik GmbH
Königsbenden 12
52249 Eschweiler – Germany

To return your goods for exchange, repair, or other purposes, please use the following address. Attention! To allow for a trouble-free complaint or return, it is important to contact our customer service team before returning your goods.

Retourenabteilung
WilTec Wildanger Technik GmbH
Königsbenden 28
52249 Eschweiler – Germany

E-mail: **service@wiltec.info**

Tel: +49 2403 55592-0

Fax: +49 2403 55592-15

Introduction

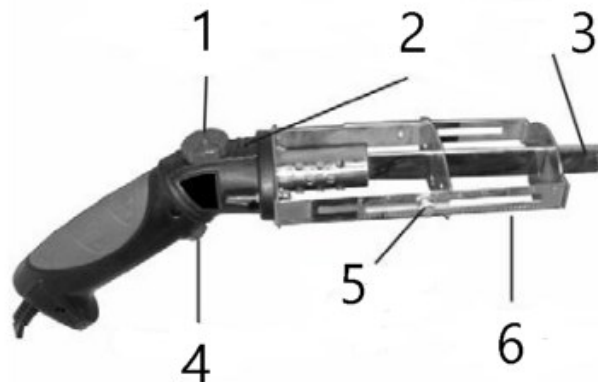
Thank you for choosing to purchase this quality product. To minimise the risk of injury, we ask you to always take some basic safety precautions when using this product. Please read this operating manual carefully and make sure that you understand it. Keep these operation instructions in a safe place.

The foam cutter is a professional hot knife to cut foamed plastics. It heats up in a matter of seconds and allows its user to precisely control the temperature.

Safety instructions

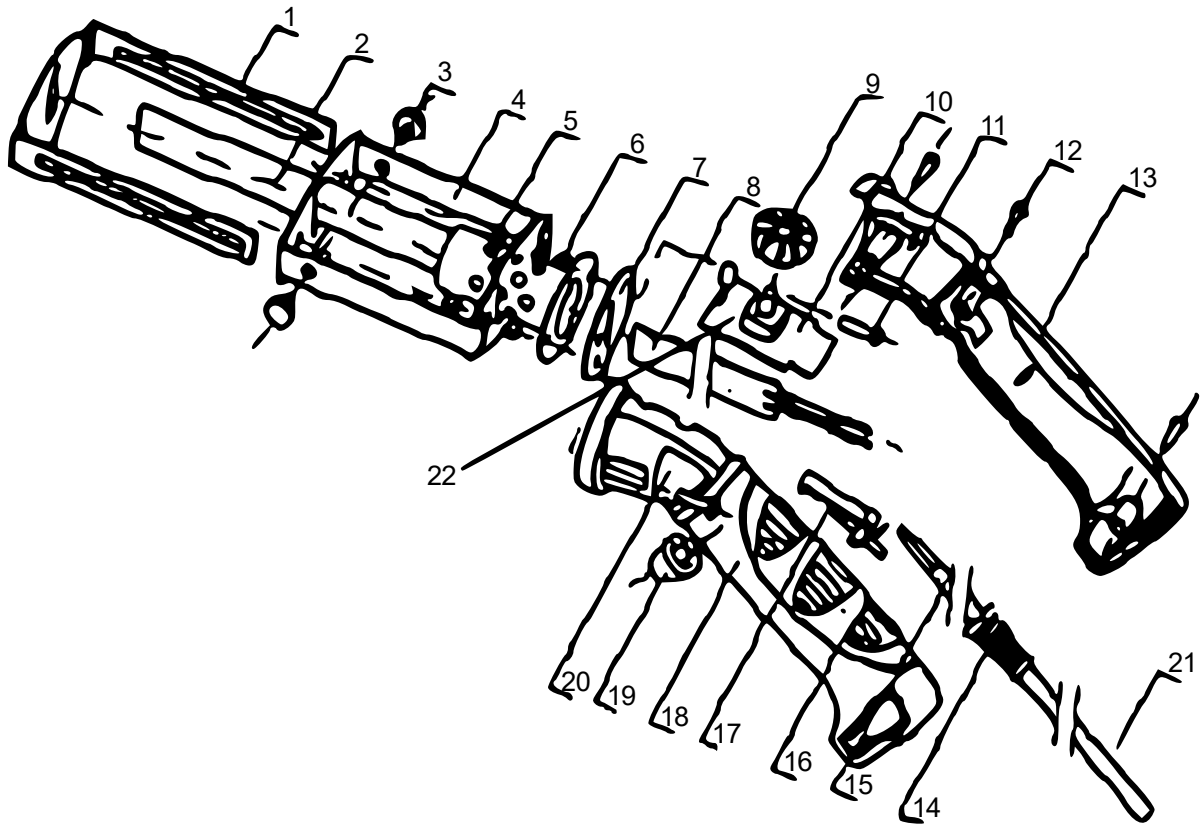
- Before use, check the device for completeness and functionality.
- Never use a damaged or non-operational device.
- Should the device be damaged, you should have it repaired by a qualified person.
- Do not apply too great a force when using the device.
- Never leave the device near children without supervision.
- The device is not intended for use by persons (including children) with impaired or limited physical, sensory, and mental abilities or lack of experience and/or real knowledge, unless they are supervised by a person responsible for their safety or follow the instructions made by this person on how to correctly use the device.
- Obey all instructions and indications of this user's manual to avoid damaged and injuries.
- Only operate the device in well-ventilated areas.
- Do not touch the blade during heating and do not bring it near flammable materials after heating.
- Do not touch the blade until it has cooled down. **Burning hazard!**
- Do not burn away residues present on the blade; this would deform the blade.
- Do not use the cutter in wet conditions and keep it away from rain.
- Only cut materials that the device is designed for.

Main parts



Nº	Name	Nº	Name
1	Temperature control	4	Switch-on button
2	Power LED	5	Blocking screw
3	Blade	6	Blade-holder

Exploded view and parts list



Nº	Name	Qty.	Nº	Name	Qty.
1	Scale-holder	1	12	Self-tapping screw (ST3)	3
2	Blade	1	13	Housing (B)	1
3	Blocking screw (M4x8)	2	14	Cover	1
4	Blade-holder	1	15	Electric wire	1
5	Nut and cover (M4)	2	16	Rubber handle	1
6	Nut (M4)	2	17	On/off switch	1
7	Isolating piece	1	18	Housing (A)	1
8	Heating element	1	19	Power switch	1
9	Temperature adjustment	1	20	Nameplate	2
10	Conductor board	1	21	Power cable	1
11	Head pan screw (M4x15)	2	22	Power LED	1

Operation

1. The cutting depth of the blade can be adjusted up to 3¾" when using the scale mount (1). To adjust the depth, loosen the two blocking screws (3).
2. Pull out or retract the scale-holder (1) to the desired depth of cut. Then re-tighten the two blocking screws (3).
3. Plug in the plug to the mains.
4. Turn the temperature control (9) to the desired temperature.

Note! The specified temperatures can deviate by ±5 °C.



5. Press and hold the power button **(19)** to heat up the blade **(2)**. The blade takes about 1 min to reach the pre-set operating temperature and then stays at the selected temperature.
6. The operating lamp **(22)** lights up during operation.
7. When the blade **(2)** has reached the pre-set temperature, you can use the sharp edge of the blade to cut lines or the side of the blade to cut wide grooves.
8. When you release the power button **(19)**, the power to the blade **(2)** will be cut off and the blade will gradually cool down.
9. It takes a few minutes for the residual heat from the blade **(2)** to dissipate. Be careful while the blade is still hot. **Burning hazard!**
10. Disconnect the power plug from the mains.
11. When the device has completely cooled down, store it in a clean, dry, and safe place out of the reach of children and other unauthorised persons.

Maintaining and cleaning

- Properly disconnect the pump from its power supply by removing its plug from the socket before performing any kind of maintenance work.
- To ensure safe and efficient operation, always keep the device and its ventilation slots clean.
- If, despite all the care taken during manufacture and testing, the device fails, repair must be carried out by an authorised power-tools repair service.

Heat levels

Level	Temperature (°C)
1	100
2	160
3	230
4	360
5	450

Regulations for waste disposal

The Waste Electrical and Electronic Equipment Directive (WEEE Directive, 2012/19/EU) of the EU was implemented in the German law related to electrical and electronic equipment and appliances.

All WilTec electric devices that fall under the WEEE directive are labelled with the symbol of a crossed-out wheeled rubbish bin. This symbol indicates that this electric device must not be disposed of with the domestic waste.

WilTec Technik GmbH is registered with the German registration authority EAR (Stiftung Elektro-Altgeräte Register) under the WEEE-registration number DE45283704.

Disposal of used electrical and electronic devices (intended for use in the countries of the European Union and other European countries with a separate waste collection system for these devices).

The symbol on the packaging or the product itself indicates that this product must not be treated as normal domestic waste but must be disposed of at a recycling collection station for electrical and electronic waste.

By disposing of this product correctly, you contribute to the protection of the environment and the health of your fellow people. Inappropriate disposal threatens the environment and health.



Material recycling helps to reduce the consumption of raw materials.

Additional information about the recycling of this product can be provided by your local commune, the municipal waste disposal facilities, or the store where you purchased the product.

Address:
WilTec Wildanger Technik GmbH
Königsbenden 12 / 28
52249 Eschweiler Germany

Important Note:

Reproduction and any commercial use (of parts) of this operating manual, requires a written permission of WilTec Wildanger Technik GmbH.