

Operating instructions

30-tons Workshop Press 64210

wiltec



Illustration similar, may vary depending on model

Please read and follow the operating instructions and safety information prior to initial operation.

Technical changes reserved!

Illustrations, functional steps, and technical data may deviate insignificantly due to continuous further developments.



The information contained in this document may alter at any time without prior notice. No part of this document may be copied or otherwise duplicated without prior written consent. All rights reserved. WilTec Wildanger Technik GmbH cannot be held liable for any possible mistakes in this operating manual, nor in the diagrams and illustrations shown.

Although WilTec Wildanger Technik GmbH has made every possible effort to ensure that this operating manual is complete, accurate, and up-to-date, errors cannot be ruled out entirely.

If you have found an error or wish to suggest an improvement, we look forward to hearing from you. Send us an e-mail to:

service@wiltec.info

or use our contact form:

<https://www.wiltec.de/contacts/>

The most recent version of this manual in several languages can be found in our online shop:

<https://www.wiltec.de/docsearch>

Our postal address is:

WilTec Wildanger Technik GmbH
Königsbenden 12
52249 Eschweiler – Germany

To return your goods for exchange, repair, or other purposes, please use the following address. Attention! To allow for a trouble-free complaint or return, it is important to contact our customer service team before returning your goods.

Retourenabteilung
WilTec Wildanger Technik GmbH
Königsbenden 28
52249 Eschweiler – Germany

E-mail: **service@wiltec.info**
Tel: +49 2403 55592-0
Fax: +49 2403 55592-15

Introduction

Thank you for choosing to purchase this quality product. To minimise the risk of injury, we ask you to always take some basic safety precautions when using this product. Please read this operating manual carefully and make sure that you understand it.

Keep these operation instructions in a safe place.

Safety instructions/warnings



The owner and/or user must have read and understood the operating instructions of the device before using it. Installed personnel should be cautious, competent, trained, and qualified in the safe handling of the working equipment used when working with the shop press. Warnings should be read and understood.

- Be familiar with the application control, the application process and the warnings.
- Make sure that all connectors are attached and secure.
- Make sure to know the contents of the instructions for use.
- This device is not intended to be used by persons (including children) with reduced physical or mental abilities or with a lack of experience and knowledge, unless they be supervised and/or instructed by a person responsible for their safety.
- Children should be supervised to ensure that they do not play with the device.
- Immediately contact your superior or workshop if something unforeseen happens.
- Stay concentrated and do not allow any distraction during work.
- Do not use welding equipment near the press.
- Always make sure that the workplace is well-lit.
- Make sure to wear solid shoes.
- Use a hair net for long hair.
- Wear appropriate clothing.
- Take off jewellery (rings, earrings, watches, etc.).
- Make sure not to wear loose strips or belts.
- Only use the press if you feel able to.
- Long working in an upright position can cause a feeling of dizziness. Make regular breaks and drink enough.
- Never open threaded connections that are under charge/pressure.
- Bring the press to its lowest position before refilling hydraulic oil. Only use high-quality hydraulic oil, **NEVER** use break liquid, alcohol, glycerine, cleaning agents, engine oil, water, dirty oil, or other unsuitable liquids.
- The hydraulic cylinder is under pressure and must not be opened by force.

Control/inspection

- Before commissioning the press, perform a visible inspection to find leaks, damages, loose, missing, or worn parts. Regularly control the oil level. Bring the press to its lowest position before refilling hydraulic oil. Remove the cap; the oil level must exactly reach to the opening. If necessary, refill hydraulic oil. Change all the oil one a year.
- Regularly apply lubricant to all moving parts. Regularly check the jack for rust, cracks, and corrosion. Clean the affected spots with an oily cloth.
- In case it should be necessary to scrap the press, the oil should be drained and cleaned up correctly; the rest of the press should be recycled.



Warning

- Read these instructions carefully before operating the device.
- This workshop press may only be operated by persons being experienced in operating this type of devices and being trained. In case you have no experience in matters of using this machine, have yourself trained beforehand.
- Do not exceed the capacity of the press when operating it.
- This workshop press is only designed for aligning, bending, and straightening. No springs or other objects susceptible to being catapulted through the room may be compressed. No objects susceptible to bursting while being worked on may be compressed.
- Before operating the workshop press, make sure that there are no damaged parts. Tighten all loose screws.
- Certain parts might be catapulted out of the press when being compressed. Protect yourself consequently to prevent any injuries. Do not reach into the device or near the pressure piston. Make sure that the piece to be worked on is well centred and fixed on the pressure plate for not to be catapulted out of the press during work.
- Always wear safety goggles and appropriate protective clothes.

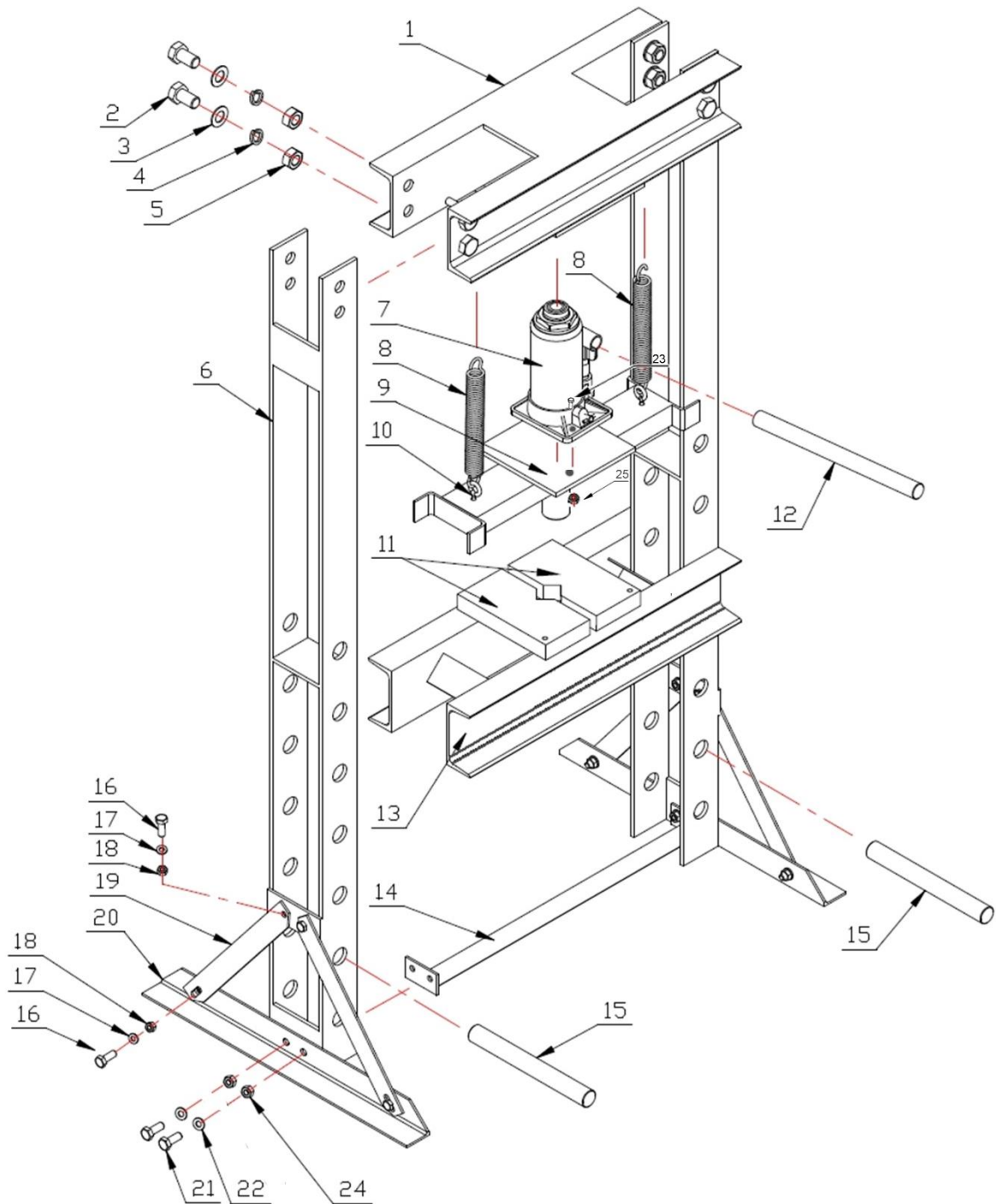
Maintenance

- Check the workshop press for possible damages before operating it. Otherwise, the workshop press cannot be operated.
- Regularly lubricate all moving parts such as the hydraulic piston.
- Check the hydraulic connections or conducts before operating, making sure that there are no damages.

Troubleshooting

Problem	Possible cause	Solutions
Piston does not move	Mechanical part damaged	Apply lubricating oil or grease.
Piston does not raise, raises but slowly	1. container overfilled	1. Adapt the oil level accordingly.
	2. Incorrect connections	2. Clean and lubricate moving parts.
Piston does not completely raise	Oil level too low	Top up oil.

Exploded view and parts list





No	Name	Quantity
1	Beam	1
2	M16X35 Bolt	8
3	WasherΦ16	8
4	Spring WasherΦ16	8
5	M16 Nut	8
6	Upright post	2
7	Bottle jack	1
8	Tension spring	2
9	Jack Plate	1
10	Pull bolt	2
11	Arbor Plate	2
12	Handle	1
13	Work bench	1
14	Rung	1
15	Pin	2
16	M10X25 Bolt	8
17	WasherΦ10	8
18	M10 Nut	8
19	Bracing	4
20	Foot	2
21	M12x30 Bolt	4
22	WasherΦ12	4
23	M8X12 Bolt	2
24	M12 Nut	4
25	M8Nut	2



Important note:

Reproduction and any commercial use (of parts) of this operating manual, requires a written permission of WilTec Wildanger Technik GmbH.