

Operating instructions

3-stage Reverse Osmosis

64403



Illustration similar, may vary depending on model

Read and follow the operating instructions and safety information prior to initial operation.

Technical changes reserved!

Illustrations, functional steps, and technical data may deviate insignificantly due to continuous further developments.

Updating the documentation

If you have suggestions for improvement or have found any irregularities, please contact us.

The information contained in this document may alter at any time without prior notice. No part of this document may be copied or otherwise duplicated without prior written consent. All rights reserved. WilTec Wildanger Technik GmbH cannot be held liable for any possible mistakes in this operating manual, nor in the diagrams and illustrations shown.

Although WilTec Wildanger Technik GmbH has made every possible effort to ensure that this operating manual is complete, accurate, and up-to-date, errors cannot be ruled out entirely.

If you have found an error or wish to suggest an improvement, we look forward to hearing from you.

Send us an e-mail to:

service@wiltec.info

or use our contact form:

<https://www.wiltec.de/contacts/>

The most recent version of this manual in several languages can be found in our online shop:

<https://www.wiltec.de/docsearch>

Our postal address is:

WilTec Wildanger Technik GmbH
Königsbenden 28
52249 Eschweiler – Germany

To return your goods for exchange, repair, or other purposes, please use the following address. Attention! To allow for a trouble-free complaint or return, it is important to contact our customer service team before returning your goods.

Retourenabteilung
WilTec Wildanger Technik GmbH
Königsbenden 28
52249 Eschweiler – Germany

E-mail: **service@wiltec.info**

Phone: +49 2403 55592–0

Fax: +49 2403 55592–15

Introduction

Thank you for choosing to purchase this quality product. To minimise the risk of injury, we ask you to always take some basic safety precautions when using this product. Please read this operating manual carefully and make sure that you understand it.
Keep these operation instructions in a safe place.

Safety information

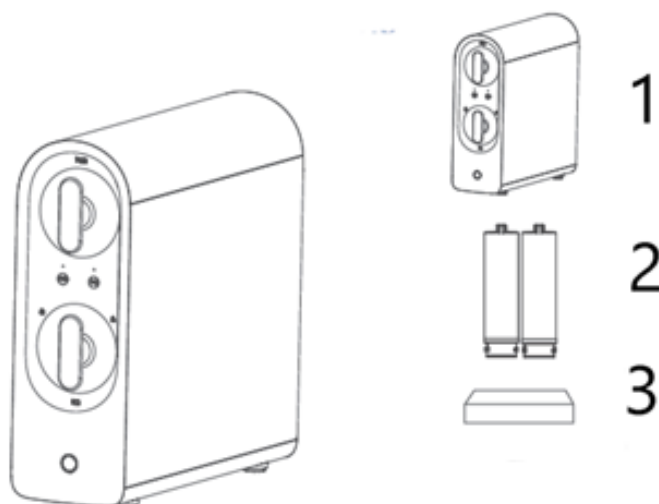
- Regularly clean and replace the filter cartridges.
- Do not disassemble the parts randomly; this could provoke leakages or damages.
- Do not use mains adaptors the voltage of which is not suitable.
- Before storing the device for a long period, disconnect the mains plug and close the water tap.
- Do not store or use the device when the ambient temperature is 0 °C or below.
- Proceed with caution when installing or unmounting a cartridge or when moving the device.

Other instructions

- When not using the device, interrupt the water supply and close the ball valve to avoid damages caused by water hammers. Uncontrolled water hammers might cause leakage or damages to the filter housing. Warranty is excluded for damages caused by water hammers.
- When problems occur, disconnect the device from the mains and water supply and contact an expert. Changing the filter might repair the problem.
- The device vibrates during operation.
- It is recommended to have an expert replace the cartridge.
- It is normal to hear vibrations when the system produces water.

Note! A water hammer is a pressure surge or pressure wave that occurs when moving water is forced to suddenly exit or change direction. If a resident suddenly closes a valve, a pressure wave spreads through the pipework of the building.

Product and accessories



Nº	Part
1	Filter system
2	Two filter cartridges, including: PCB filter (PP sediment filter (PP) & active-carbon filter (CTO)), reverse-osmosis membrane (RO)
3	Accessories box, including: water faucet, three-way valve, three hoses, user's manual, adaptor, and drain clamp

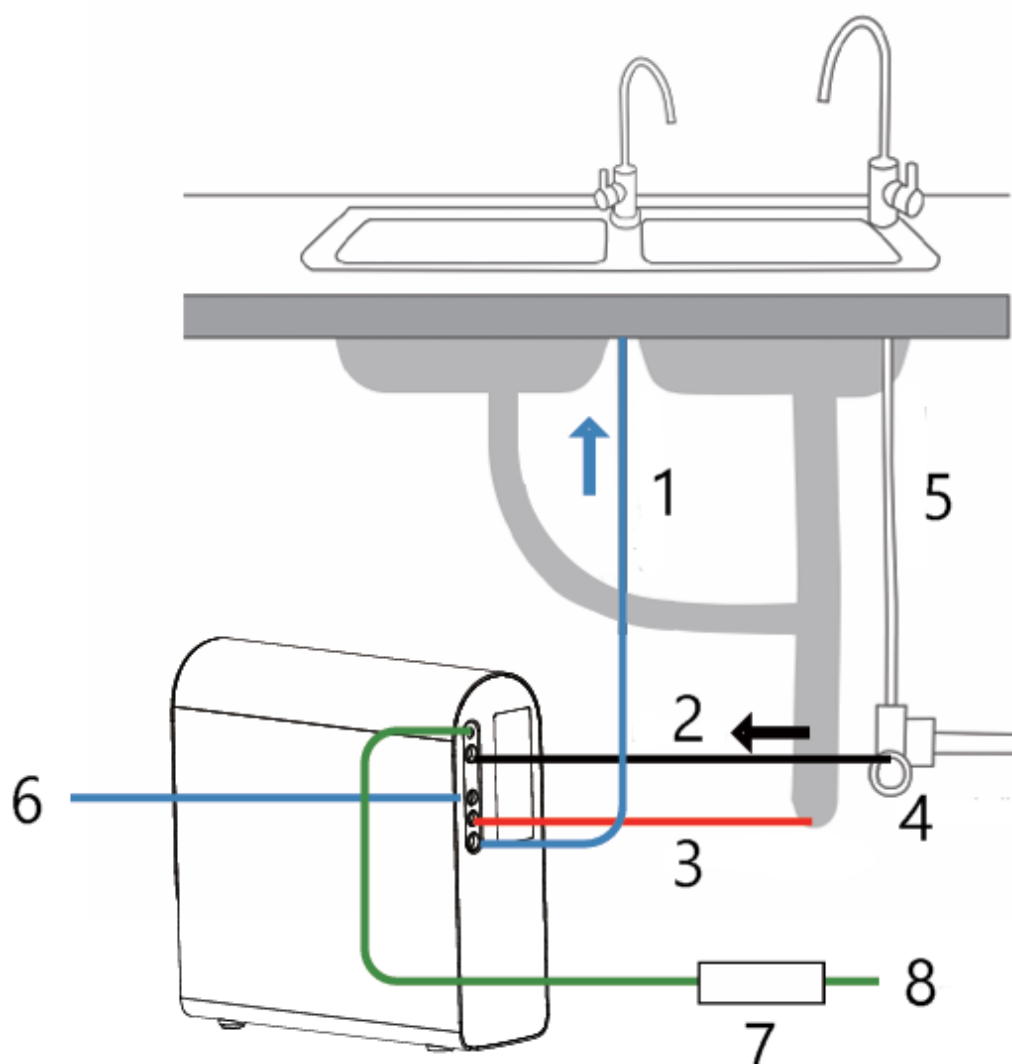
Drawings illustrating contents of accessories box



Nº	Part	Nº	Part
1	Water faucet	4	User's manual
2	3-way valve	5	Adaptor
3	3/8" PE hose (white, blue) 2 × 1/4" PE hose (red, blue) 2 ×		

Caution: might vary depending on disposability.

Connection diagram



Nº	Name/description	Nº	Name/description
1	Pure-water pipe	5	Tap water
2	Inlet pipe	6	Filtered water (optional)
3	Sewage pipe	7	Adaptor
4	3-way ball valve	8	power supply

Installation

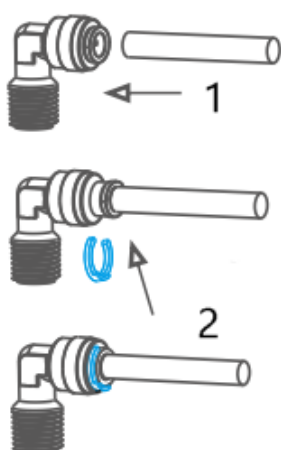
Note on cutting the pipe



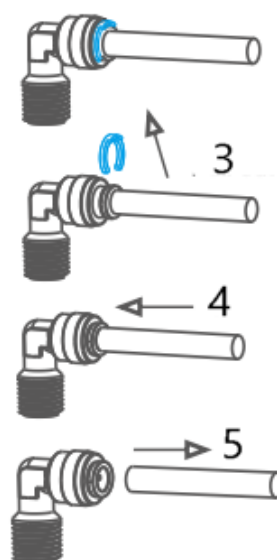
A pipe cutter is used to cut the pipe flat, smooth, and without burrs.

Quick coupling

Attaching the water pipe



Removing the water pipe



Nº	Name/description	Nº	Name/description
1	Insert water pipe	4	Press to release the lock
2	Insert clamp	5	Pull out water pipe
3	Pull out clamp		

Reversing valve installation

1. Close the feedwater valve.
2. Wrap sealing tape around the thread of the reversing valve.
3. Connect the diverter valve to the feed water valve and the hose (Fig. 1).
4. Insert a 1/4" pipe into the reversing valve (Fig. 2).
5. Open the feed water valve and the tap to check whether the connection is tight.

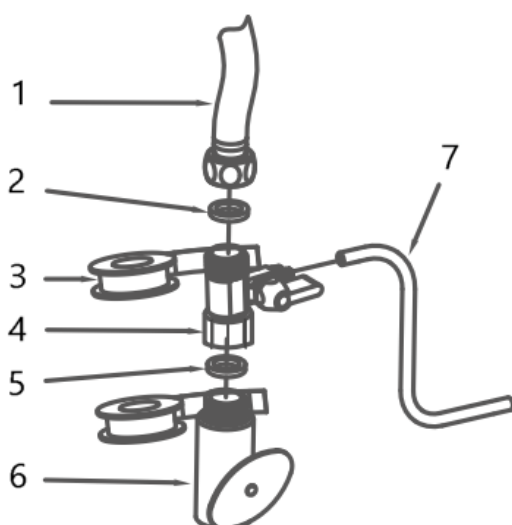


Fig. 1

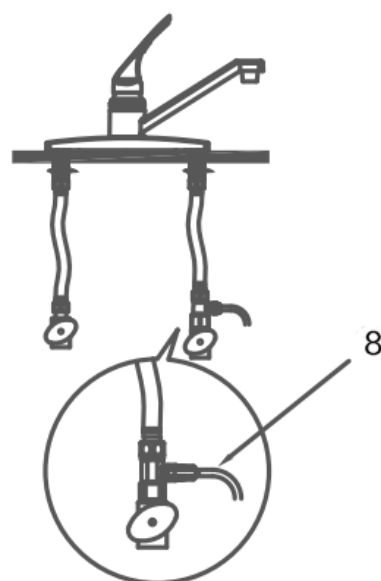


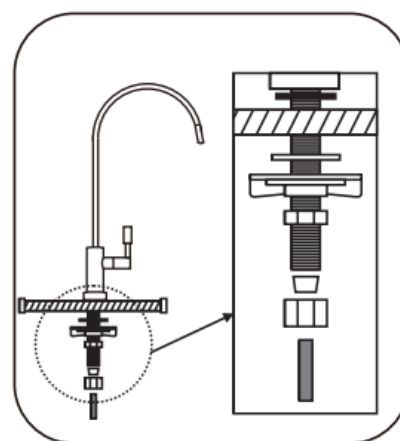
Fig. 2

Nº	Part	Nº	Part
1	Hose	5	O-ring
2	O-ring	6	Feed-water valve
3	Sealing tape	7	1/4" tube
4	Reversing valve	8	1/4" tube

Mounting the water faucet

- Chose a suitable spot near your washbasin to install the water faucet.
- Drill a 12-mm diameter hole into the worktop.
- Install the washers, plates, gaskets, and nuts in the order shown and tighten them on the worktop.
- Fix the reverse-osmosis water line (1/4", blue) to the underside of the water faucet, then connect the line to the device.

Attention! Make sure that the lines have been connected properly.

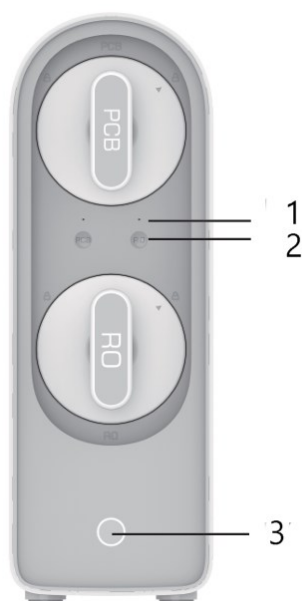


First application

Connect the RO system to the adapter. All LED displays flash three times, the buzzer sounds three times, and the machine rinses for 90 s.

1. The RO system starts treating water while the white light is flashing. When the machine is in standby mode, only the white light is permanently lit.
2. If the water supply is insufficient or the water pressure is low, the yellow light will come on and the buzzer will sound four times. As soon as there is enough water or pressure, the machine rinses for 15 s.
3. If there is a water leak, the red light flashes and the buzzer sounds.
4. After a total operating time of 2 hours, the machine automatically performs a 15-second rinse.

Note! When using for the first time, let the water run for 10–15 min to flush the filter cartridges.



Nº	Part
1	Filter-life display
2	Filter-reset button
3	Operation light

Filter change

Filter reminder

- When the lifespan of the filter is down to 20 %, the corresponding LED indicator will light up.
- The buzzer sounds 3 times when the machine is treating water.
- When the filter life has expired, the buzzer will sound 5 times as soon as the machine treats water.

Resetting the filter

1. Press and hold the PCB button and the RO button simultaneously for 3 s to activate the selection mode.
2. Press the corresponding button for 3 s to select the filter that needs to be replaced.
3. The light flashes three times and the buzzer sounds, indicating that the filter reset is complete.
4. The selection mode will automatically end if no action is taken within 3 s.

Replacing the cartridges and maintaining the device

Recommended replacement intervals for cartridges

Stages	Filter cartridges	Function	Service life (guide value) (months)
1st stage	PCB filter	PP filter – removes larger suspended particles in the water. CTO filter – removes organic impurities, chlorine, odours, and cloudiness.	3–6
2nd stage	Reverse-osmosis membrane (800G)	Removes bacteria, heavy metals, dissolved solids, and salt content.	12–24
	ROC filter (600G)	The RO membrane in combination with an activated-carbon post-filter not only removes bacteria, heavy metals, and dissolved substances, but also residual chlorine in the water and improves the taste.	
	Reverse-osmosis membrane (600G)	Removes bacteria, heavy metals, dissolved solids, and salt content.	

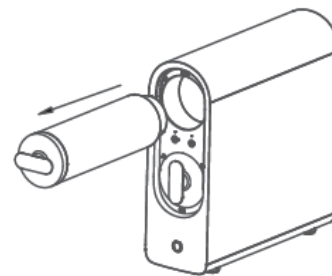
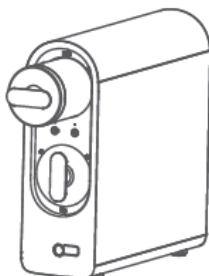
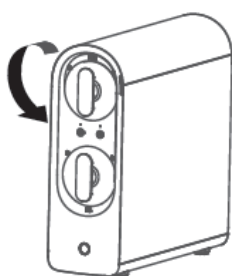
Note!

- The actual lifespan of the filter can be influenced by the region, water quality, seasons, and daily water consumption, so the time frame for filter replacement may vary.
- Please replace regularly.



Replacing the filter element

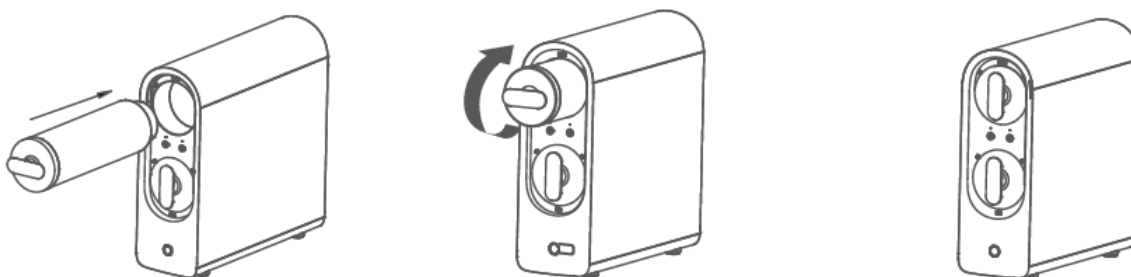
Before replacing the cartridges, turn off the water and disconnect the power supply.

1. Open the front cover.
2. Hold the filter handle firmly, turn it 90° anticlockwise, and pull it out.

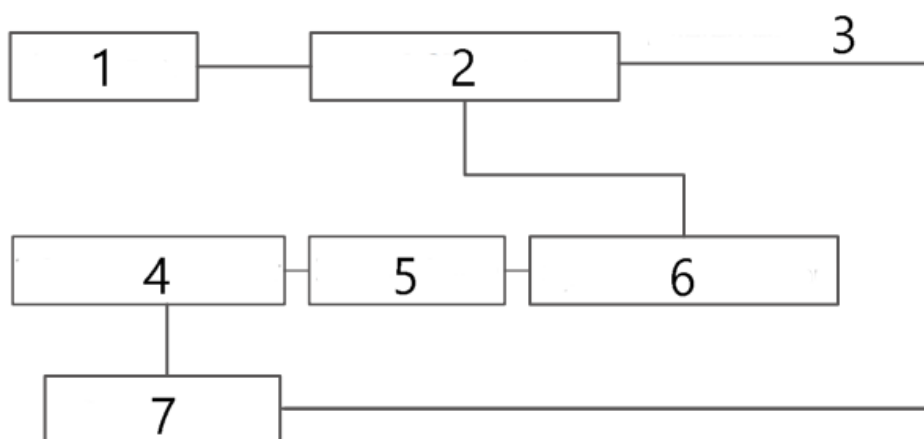


Note! Please reset the filter cartridges after they have been replaced.

3. Insert the new cartridge and align the arrow symbol .
4. Turn the cartridge 90° clockwise to position  to secure it.



Process chart of water treatment



Nº	Part	Nº	Part
1	Feed water	5	Reverse-osmosis membrane
2	PP and active-carbon filter (PCB)	6	Special booster pump
3	Filtered water (optional)	7	Water faucet
4	Reverse osmosis (optional)		

Troubleshooting

Problem	Possible cause	Proposed solution
Water pump out of order, system not working	Insufficient feed water pressure	Raise feed water pressure.
	No electricity or outage	Switch on.
	High-pressure switch damaged	Exchange high-pressure switch.
	Pump blocked, adapter fuse blown	Replace adapter, repair water pump.
Water pump is running, but system is not working	Reverse-osmosis membrane obstructed	Replace reverse-osmosis membrane.
	Pressure loss of water pump	Repair water pump.
	Solenoid valve for flushing damaged	Replace flush solenoid valve.
The water drain does not stop when the machine is in standby mode	Solenoid valve for water inlet damaged	Replace the feedwater solenoid valve.
Cannot stop working when the tap is closed or repeated starting	High-pressure switch damaged	Repair or replace high-pressure switch.
	Non-return valve damaged	Replace non-return valve.
Leak	Quick-action coupling not tight	Check cause of leakage and replace appropriate parts.
	Leaks in filter	
	Leaks at filter caps	
No water output	Quick-release coupling blocked	Replace parts individually to check the cause of the blockage
	Filter clogged	
	Clogged filter cap	

Regulations for waste disposal

The Waste Electrical and Electronic Equipment Directive (WEEE Directive, 2012/19/EU) of the EU was implemented in the German law related to electrical and electronic equipment and appliances.

All WilTec electric devices that fall under the WEEE directive are labelled with the symbol of a crossed-out wheeled rubbish bin. This symbol indicates that this electric device must not be disposed of with the domestic waste.

WilTec Technik GmbH is registered with the German registration authority EAR (Stiftung Elektro-Altgeräte Register) under the WEEE-registration number DE45283704.

Disposal of used electrical and electronic devices (intended for use in the countries of the European Union and other European countries with a separate waste collection system for these devices).

The symbol on the packaging or the product itself indicates that this product must not be treated as normal domestic waste but must be disposed of at a recycling collection station for electrical and electronic waste.

By disposing of this product correctly, you contribute to the protection of the environment and the health of your fellow people. Inappropriate disposal threatens the environment and health.



Material recycling helps to reduce the consumption of raw materials.

Additional information about the recycling of this product can be provided by your local commune, the municipal waste disposal facilities, or the store where you purchased the product.

Address:
WilTec Wildanger Technik GmbH
Königsbenden 12 / 28
52249 Eschweiler Germany

Important note:

Reproduction and any commercial use (of parts) of this operating manual, requires a written permission of WilTec Wildanger Technik GmbH.