

Operation Manual

Naturewater 3-stage RO System

64406-64408



Illustration similar, may vary depending on model

Read and follow the operating instructions and safety information before using for the first time.

Technical changes reserved!

Due to further developments, illustrations, functioning steps, and technical data can differ insignificantly.

Updating the documentation

If you have suggestions for improvement or have found any irregularities, please contact us.



The information contained in this document may alter at any time without previous notice. It is prohibited to copy or spread any parts of this document in any way without prior written allowance. All rights reserved.

The WilTec Wildanger Technik GmbH cannot be held accountable for any possible mistakes in this operating manual, nor in the diagrams and figures shown.

Even though, the WilTec Wildanger Technik GmbH has undergone biggest possible efforts to ensure that the operating manual is complete, faultless, and up to date, mistakes cannot be entirely avoided.

If you should find a mistake or wish to make a suggestion for improvement, we look forward to hearing from you.

Send an e-mail to:

service@wiltec.info

or use our contact form:

<https://www.wiltec.de/contacts/>

The most recent version of this manual in various languages can be found in our online shop via:

<https://www.wiltec.de/docsearch>

Our postal address is:

WilTec Wildanger Technik GmbH
Königsbenden 12
52249 Eschweiler
Germany

To return orders for exchange, repair, or other purposes, please use the following address. Attention! To allow for a smooth execution of your complaint or return, it is important to contact our customer service team before returning the goods.

Returns Department
WilTec Wildanger Technik GmbH
Königsbenden 28
52249 Eschweiler

E-mail: **service@wiltec.info**

Tel: +49 2403 55592-0

Fax: +49 2403 55592-15



Introduction

Thank you for purchasing this quality product. **To minimise the risk of injury we urge that our clients take some basic safety precautions when using this device. Please read the operation instructions carefully and make sure you have understood its content.**

Keep these operation instructions safe.

Safety Instructions

- Clean, flush and replace filter cartridges regularly.
- Do not disassemble parts indiscriminately as this may cause leaks or damage.
- Do not use a power supply with an inappropriate voltage rating.
- Disconnect the mains plug and turn off the water tap before storing the machine for an extended period of time.
- Do not store or use the machine at an ambient temperature of 0 °C or below.
- Take care when installing or removing the cartridge or moving the machine.

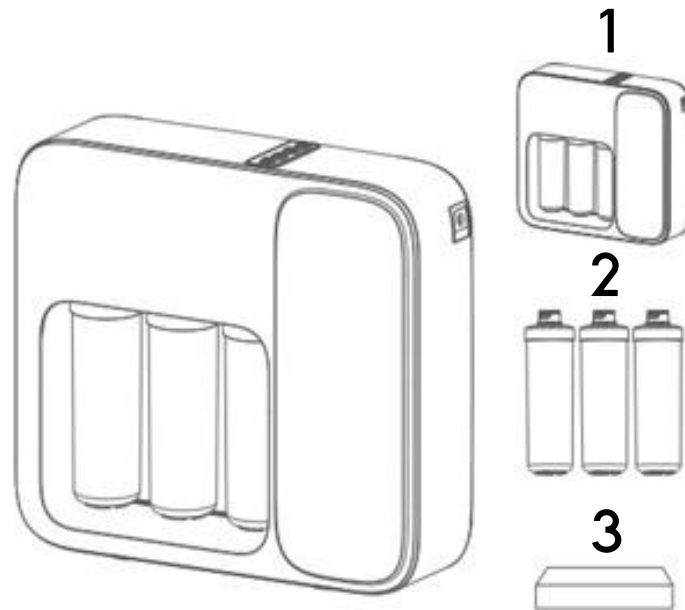
Other instructions

- When not in use, turn off the water supply and close the ball valve to prevent damage from water hammer. Uncontrolled water hammer can cause leaks and damage to the filter housing. We accept no liability for damage caused by water hammer.
- In the event of a problem, disconnect the appliance from the power and water supply and contact a specialist. Replacing the filters may solve the problem.
- The machine will vibrate slightly during the filtration process.
- It is recommended to have the cartridges replaced by a specialist.

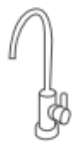
Caution!

Water hammer is a shock or pressure wave that occurs when flowing water is suddenly forced to stop or change direction. If the occupants of a building suddenly close a valve, a pressure wave will spread through the building's pipes.

Product and accessories



Nº	Name
1	Filter system
2	Three filter cartridges consisting of: Combi filter: PP and activated carbon block filter, reverse osmosis membrane and T33 inline activated carbon block filter
3	Accessory box consisting of: Faucet, three-way valve, three hoses, instructions, and adapter



1



2



3



4



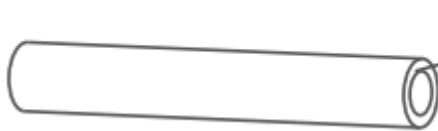
5

Nº	Name	Nº	Name
1	Water faucet	4	User's manual
2	3-way valve	5	Adaptor
3	3 PE hoses (1,5 m, ¼", red, blue, and white)		

Note: might vary depending on disposability.

Installation instructions

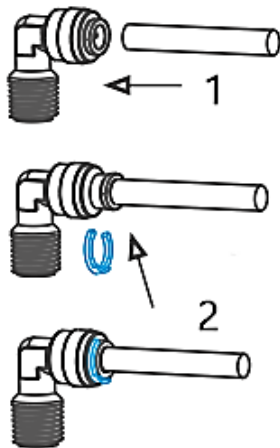
Note on cutting the tube



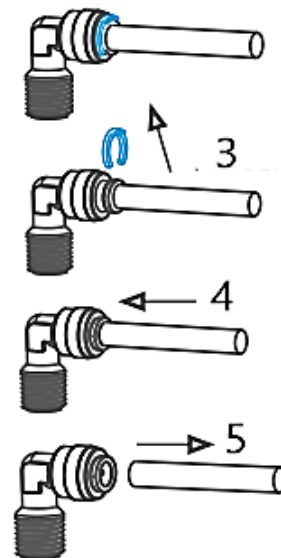
Use a pipe cutter to cut the tube flat and smooth without burrs.

Quick fitting

Install the water pipe



Pull out the water pipe



Nº	Description	Nº	Description
1	Insert water pipe.	4	Release the lock by pressing it.
2	Insert clamp.	5	Pull out the water pipe.
3	Pull out the clamp.		

Installing the diverter valve

1. Close the feed water valve.
2. Wrap sealing tape around the thread of the diverter valve.
3. Connect the diverter valve to the feed water valve and the hose (Fig. 1)
4. Insert the 1/4" pipe into the diverter valve (fig. 2).
5. Open the feed water valve and the tap to check that the connection is leaktight.

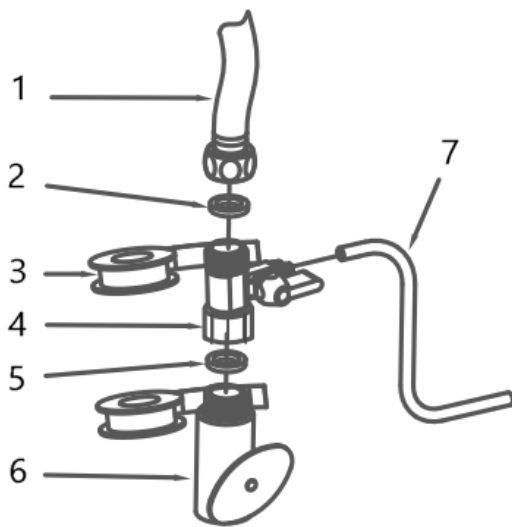


Fig.1

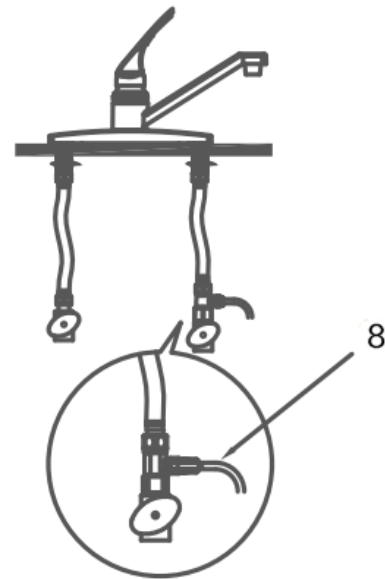
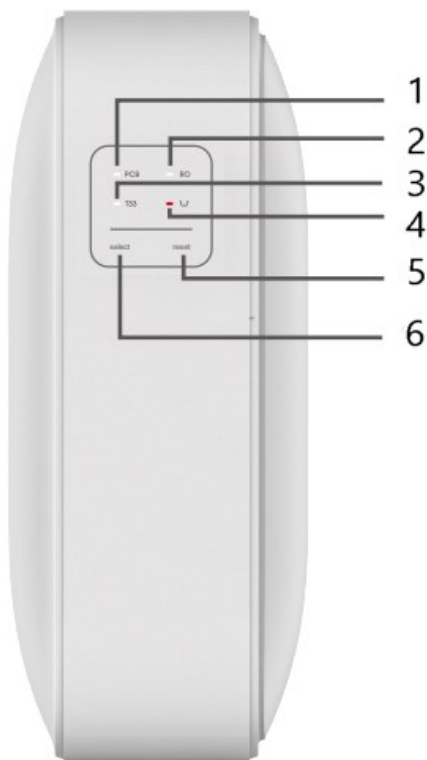


Fig.2

Nº	Name	Nº	Name
1	Hose	5	O-ring
2	O-ring	6	Feed water valve
3	Sealing tape	7	¼" pipe
4	Diverter valve	8	¼" pipe



Nr.	Name
1	Combi filter indicator
2	RO membrane indicator
3	T33 activated carbon block filter indicator
4	Low water indicator
5	Filter reset button
6	Select button

Instructions for first use

1. Connect the reverse osmosis system to the adapter. The buzzer sounds three times, then all LED indicators start flashing and the appliance is flushed for 90 s.
2. Automatic rinsing: After 2 hours of operation, the appliance is automatically rinsed for 10 s.
3. Manual rinse: Press both the selection button and the reset button for 2 s. The appliance switches to rinse mode and rinses for 90 s.

Replacing the filter cartridges

Reminder function for cartridge replacement

The corresponding LED lights up when 20 % of the service life remains. The buzzer sounds 3 times when the appliance is producing water.

When the service life has expired, the buzzer sounds 5 times when the appliance is producing water.

Resetting the cartridge

- Press and hold the selection button for 2 s to enter filter reset mode. The LED indicator for the combi filter lights up and the other LED indicators are off.
- Press the selection button to select the cartridge to be replaced. When the corresponding indicator lights up, press the reset button.
- After resetting, the selection mode is automatically cancelled if no operation is performed.

Replacing the cartridges and maintaining the device

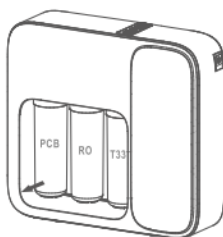
Recommended replacement intervals for cartridges

Stages	Filter cartridges	Service life (guide value) (months)
1 st stage	PP and activated carbon block filter (PCB)	3–6
2 nd stage	RO membrane	12
3 rd stage	T33 inline activated carbon block filter	3–6

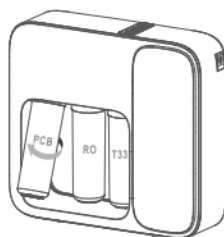
Note!

- The actual service life of filters can be influenced by areas, water quality, seasons and daily water consumption, so the period for filter replacement may vary.
- Please replace the cartridges regularly.

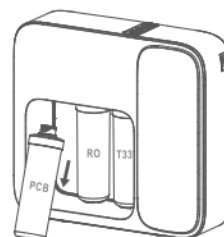
Cartridge Replacement Steps



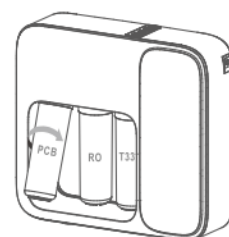
Step 1



Step 2



Step 3

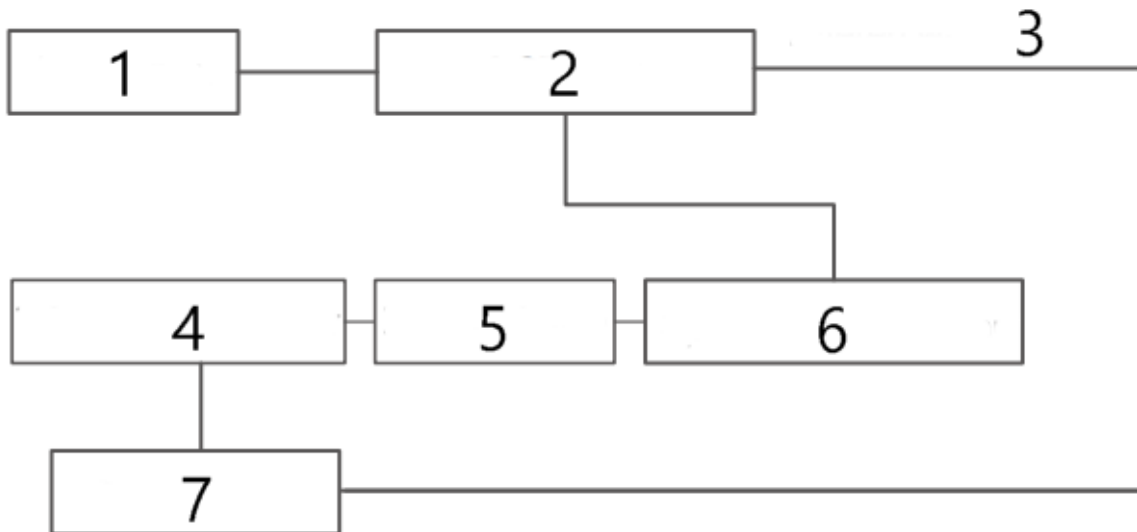


Step 4

Technical data

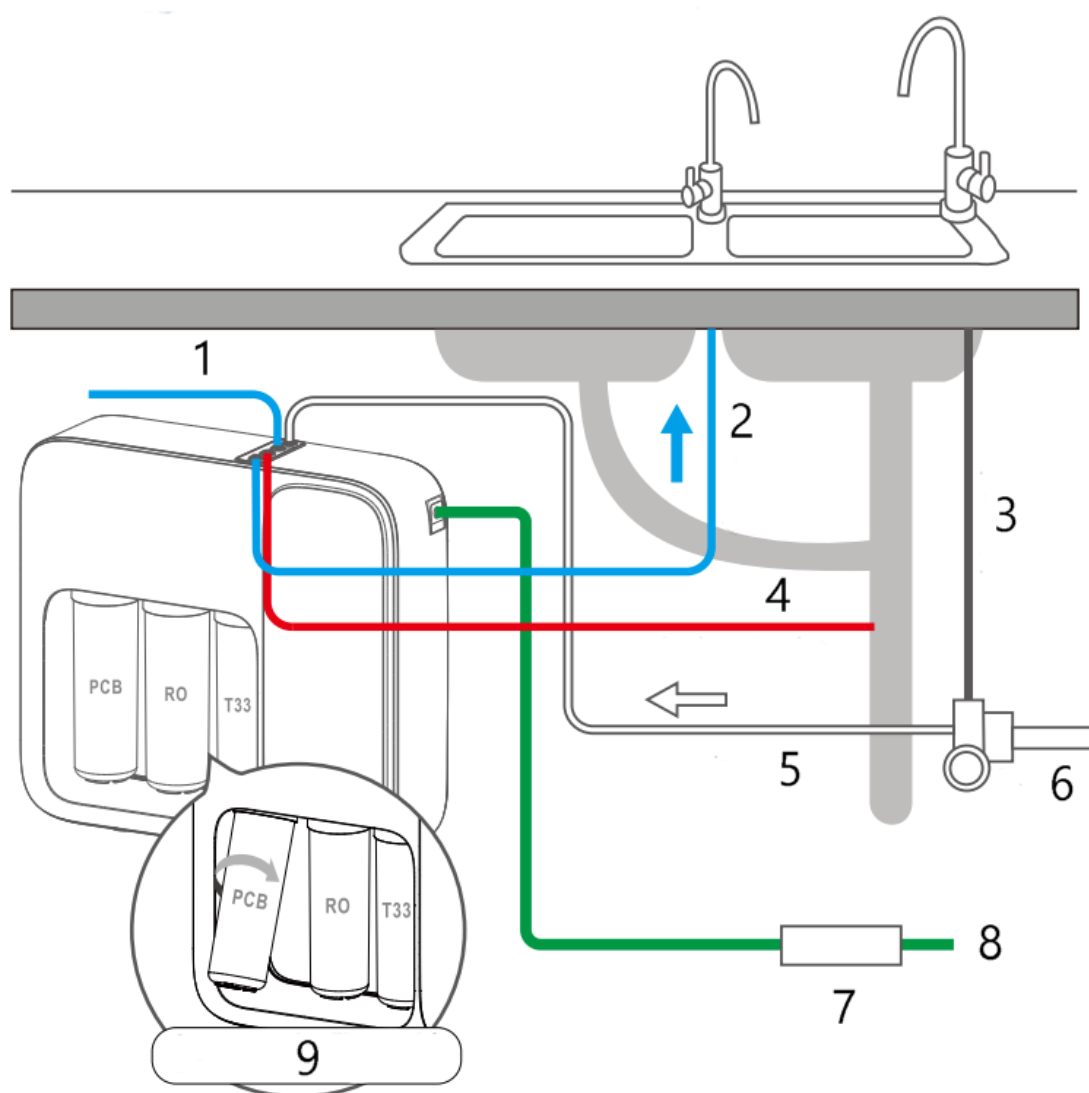
Feed water quality	Municipal tap water
Working pressure (bar)	5–7
Water inlet pressure (bar)	1–4
Suitable temperature (°C)	5–38
Humidity (%)	≤90
Water flow rate (l_{min})	0.13
Working pressure (bar)	5–7

Process chart of the water treatment process



Nº	Name	Nº	Name
1	Feed water	5	Reverse-osmosis membrane
2	PP and activated carbon block filter (PCB)	6	Special Booster pump
3	Filtered water (optional)	7	Faucet
4	Inline activated carbon block filter (T33)		

Functional schematic diagram



Nº	Name/description	Nº	Name/description
1	Filtered water (optional)	6	3-way ball valve
2	Pure water pipe	7	Adapter
3	Tap water pipe	8	Power supply
4	Drain water pipe	9	Assemble the filters in clockwise rotation.
5	Inlet pipe		



Troubleshooting

Problem	Possible cause	Proposed solution
Water pump out of order, system not working	Insufficient feed water pressure	Raise feed water pressure.
	No electricity or outage	Switch on.
	High-pressure switch damaged	Exchange high-pressure switch.
	Pump blocked, adapter fuse blown	Replace adapter, repair water pump.
Water pump is running, but system is not working	Reverse-osmosis membrane obstructed	Replace reverse-osmosis membrane.
	Pressure loss of water pump	Repair water pump.
	Solenoid valve for flushing damaged	Replace flush solenoid valve.
The water drain does not stop when the machine is in standby mode	Inlet water solenoid valve damaged	Replace feed water solenoid valve.
Cannot stop working when the faucet is off or repeated starting	High pressure switch damaged	Repair or replace high pressure switch.
	Check valve damaged	Replace check valve.
Leakage	Quick fitting leaks	Check leakage reason and change the corresponding parts.
	Filter leaks	
	Filter cap leaks	
No water output	Quick fitting clogged	Replace parts one by one to check the cause of the clog.
	Filter clogged	
	Filter cap clogged	

Disposal regulations

EU guidelines regarding the disposal of scrap electric appliances (WEEE, 2012/19/EU) were implemented in the law related to electrical and electronic equipment and appliances.

All WilTec electric devices that fall under the WEEE regulations are labelled with the crossed-out wheeled waste bin logo. This logo indicates that this electric equipment must not be disposed with the domestic waste.

The company WilTec Technik GmbH has been registered in the German registry EAR under the WEEE-registration number DE45283704.

Disposal of used electrical and electronic appliances (intended for use in the countries of the European Union and other European countries with a separate collection system for these appliances).

The logo on the article or on its packaging points out that this article must not be treated as normal household waste but must be disposed to a recycling collection point for electronic and electrical waste equipment. By contributing to the correct disposal of this article you protect the environment and the health of your fellow men. Environment and health are threatened by inappropriate disposal.



Material recycling helps reduce the consumption of raw materials.

Additional information on recycling this article can be provided by your local community, municipal waste disposal facilities, or the store where you purchased the article.

Address:
WilTec Wildanger Technik GmbH
Königsbenden 12 / 28
D-52249 Eschweiler

Important notice:

The reprint or reproduction, even of excerpts, and any commercial use, even in part, of this instruction manual require the written permission of WilTec Wildanger Technik GmbH.