

# Operation Manual

## 5-stage Reverse Osmosis System

64429-64432



Illustration similar, may vary depending on model

Read and follow the operating instructions and safety information before using for the first time.

Technical changes reserved!

Due to further developments, illustrations, functioning steps, and technical data can differ insignificantly.

Updating the documentation

If you have suggestions for improvement or have found any irregularities, please contact us.

The information contained in this document may alter at any time without previous notice. It is prohibited to copy or spread any parts of this document in any way without prior written allowance. All rights reserved.

The WilTec Wildanger Technik GmbH cannot be held accountable for any possible mistakes in this operating manual, nor in the diagrams and figures shown.

Even though, the WilTec Wildanger Technik GmbH has undergone biggest possible efforts to ensure that the operating manual is complete, faultless, and up to date, mistakes cannot be entirely avoided.

If you should find a mistake or wish to make a suggestion for improvement, we look forward to hearing from you.

Send an e-mail to:

[service@wiltec.info](mailto:service@wiltec.info)

or use our contact form:

<https://www.wiltec.de/contacts/>

The most recent version of this manual in various languages can be found in our online shop via:

<https://www.wiltec.de/docsearch>

Our postal address is:

WilTec Wildanger Technik GmbH  
Königsbenden 12  
52249 Eschweiler  
Germany

To return orders for exchange, repair, or other purposes, please use the following address. Attention! To allow for a smooth execution of your complaint or return, it is important to contact our customer service team before returning the goods.

Returns Department  
WilTec Wildanger Technik GmbH  
Königsbenden 28  
52249 Eschweiler

E-mail: **service@wiltec.info**

Tel: +49 2403 55592-0

Fax: +49 2403 55592-15



## Introduction

Thank you for purchasing this quality product. **To minimise the risk of injury we urge that our clients take some basic safety precautions when using this device. Please read the operation instructions carefully and make sure you have understood its content.**

Keep these operation instructions safe.

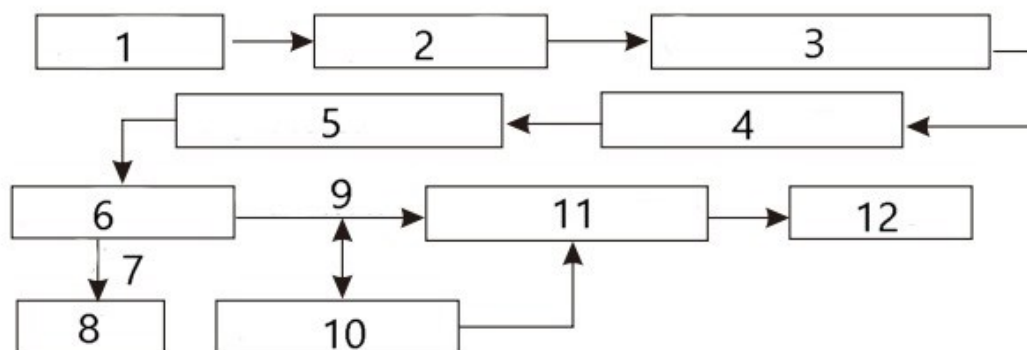
## Safety instructions

- This device is intended for operation and use according to the instructions in this manual. It is not designed for operation outside the specified parameters, and any attempt to do so or to tamper with the device can result in damage to the device and/or personal injury.
- This device is not a toy and should be kept out of the reach of young children.
- If the device requires maintenance or repair, please contact a service technician.
- Ensure that the temperature of the feed water is above 4 °C. If the water temperature is below 4 °C, ice can form and damage the device.
- This system contains filters that need to be replaced at certain intervals. Replacement intervals vary depending on usage.
- Please install the system with potable water only. If using non-potable water sources, the system will not function properly, and additional pre-treatment may be required.
- Ensure that the water pressure is approximately 4 bar. If the source water pressure exceeds the maximum pressure, a pressure reducing valve may be required.
- Ensure that the temperature of the source water is between 5 °C and 45 °C. The system will not function properly if these temperatures are exceeded. Do not install at a hot water source.
- Do not use the system for visibly contaminated water such as raw sewage or well water.
- Do not disassemble, open, or modify the device. Tampering with the device can lead to malfunctions or damage and will void the warranty.
- Do not cover the device, as this will impede heat dissipation and can cause damage or fires.
- Do not place objects on the device, as this can cause damage to the device and leaks.
- Adhere to all recommended values for operating pressure and temperatures, otherwise, the device may be damaged.
- Avoid contact with corrosive materials.
- Protect from heat.

## Filters and filter stages

Filter Stage 1	Filter Stage 2	Filter Stage 3	Filter Stage 4	Filter Stage 5
PP sediment filter	Granular activated carbon filter (GAC)	Activated carbon block filter (CTO)	Reverse osmosis membrane (RO)	Post activated carbon filter

## System function

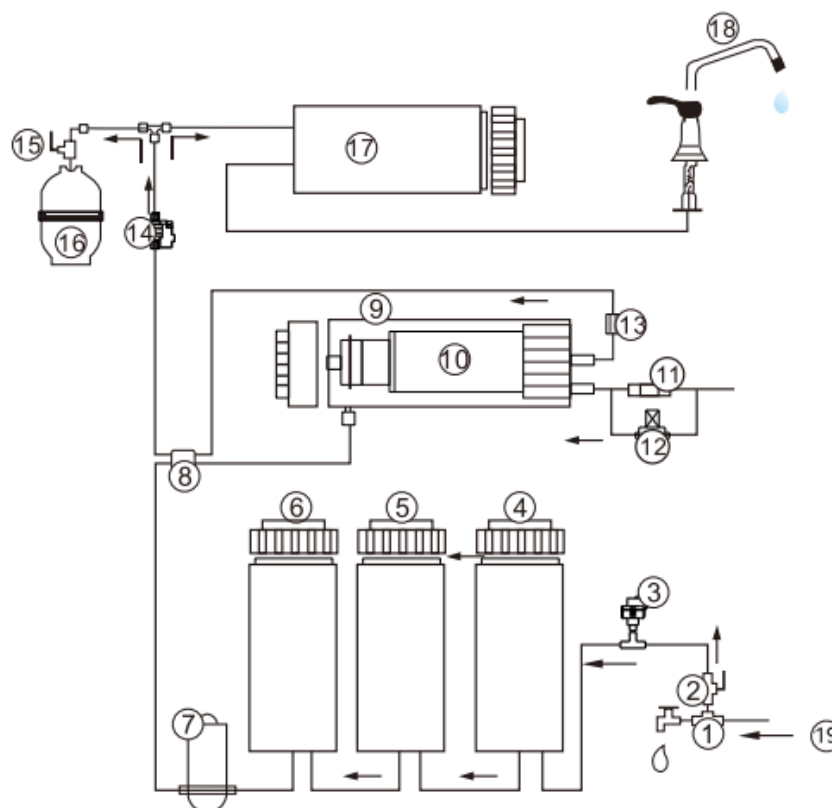


No	Name	No	Name
1	Feed water	6	Reverse osmosis membrane
2	PP filter	7	Waste water
3	Granular activated carbon filter	8	Drain
4	Activated carbon block filter	9	Pure water
5	High-pressure pump	10	Pressure tank

## Technical data

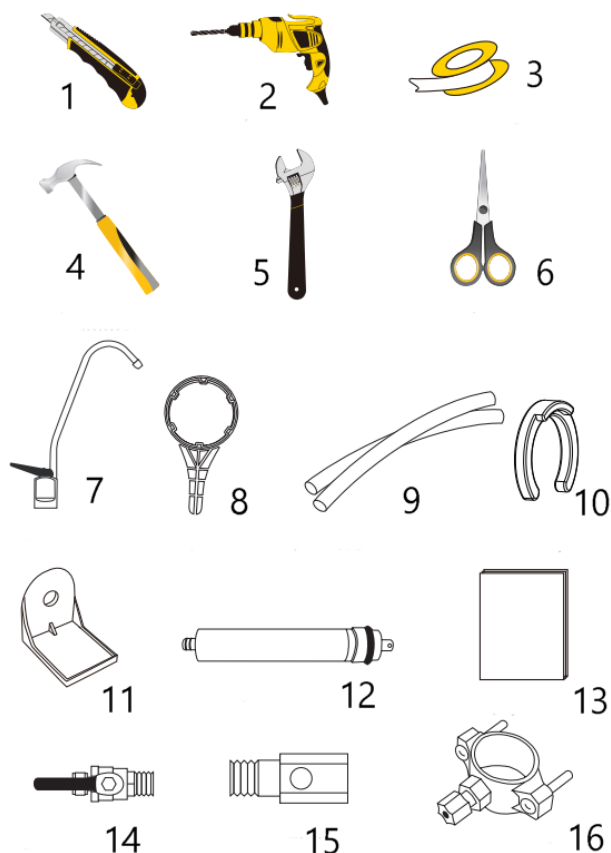
<b>Voltage and frequency</b>	110–240 V 50/60 Hz
<b>Power output (W)</b>	25–36
<b>Reverse osmosis element capacity (GPD)</b>	50 / 75 / 80 / 100 / 125
<b>Inlet TDS (ppm)</b>	≤ 2500
<b>Chlorine content (ppm)</b>	≤ 0,2
<b>Average RO rejection rate (%)</b>	98
<b>Inlet water pressure (min–max) (bar)</b>	4–10
<b>Inlet water temperature (min–max) (°C)</b>	5–45
<b>Type of flushing</b>	Automatic

### Automatic shut-off valve water flow



No	Name	No	Name
1	T-piece	11	Flow restrictor
2	Feed water valve	12	Flush solenoid valve
3	Low-pressure switch	13	Check valve
4	PP filter	14	High-pressure switch
5	Granular activated carbon filter	15	Ball valve
6	Activated carbon block filter	16	Pressure tank
7	Booster pump	17	Inline carbon filter
8	Inlet solenoid valve	18	Faucet
9	Membrane housing	19	Flowing water
10	Reverse osmosis membrane		

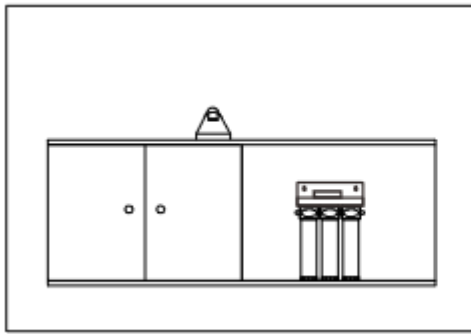
## Tools and parts required



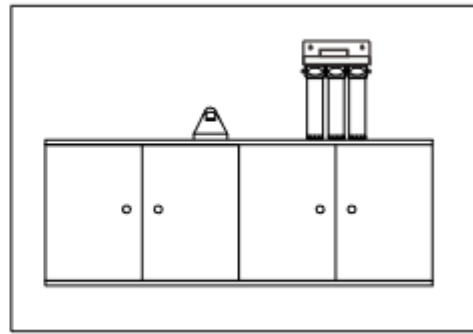
Nº	Name	Nº	Name
1	Knife	9	Water pipe
2	Electric drill	10	Clamp
3	Sealing tape	11	Bracket for tap
4	Hammer	12	Reverse osmosis membrane
5	Open-end spanner	13	Operating instructions
6	Scissors	14	Feed water valve
7	Water tap	15	T-piece
8	Assembly spanner	16	Waste water clamp

## Placement of units

- This device is designed to be installed under the sink or countertop. However, if you need to place this device in a suitable location due to lack of space or other constraints,
- When choosing the installation location, ensure that the cold-water line, drain pipe, and power outlet are easily accessible and that there is enough space for filter replacement.



Under the sink

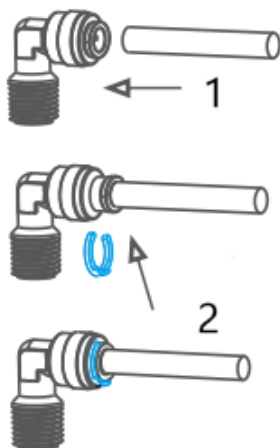


On the countertop

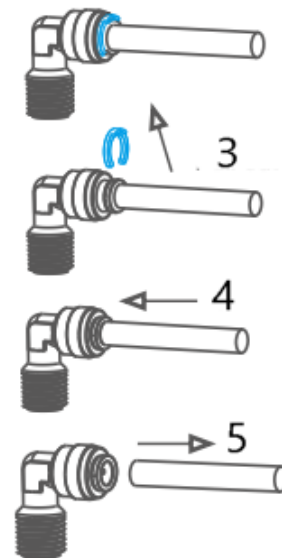
**Note!** All components and hoses should be placed in an area that is not exposed to frost or direct sunlight.

### Quick coupling

Attaching the water line



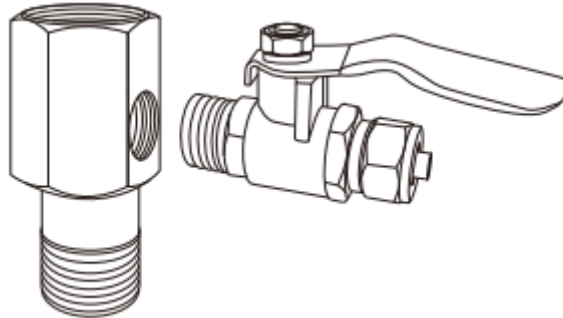
Removing the water line



Nº	Name/Description	Nº	Name/Description
1	Insert water line	4	Release lock by pressing
2	Insert clip	5	Pull out water line
3	Remove clip		

### Feed water valve and T-piece

- Install the T-piece and feed water valve according to the diagram.
- Wrap the threads of the feed water valve and T-piece with sealing tape.
- Connect the white feed water hose from the device to the feed water valve.



- Install the feed water valve.
- Install the T-piece of the feed water valve and then connect the mains water.
- **Attention!** The water supply to your device must come from the cold-water line.

**Note!** Use only cold water, as hot water can damage your device. Softened feed water extends the life of the reverse osmosis membrane.

### Installation of the wastewater clamp

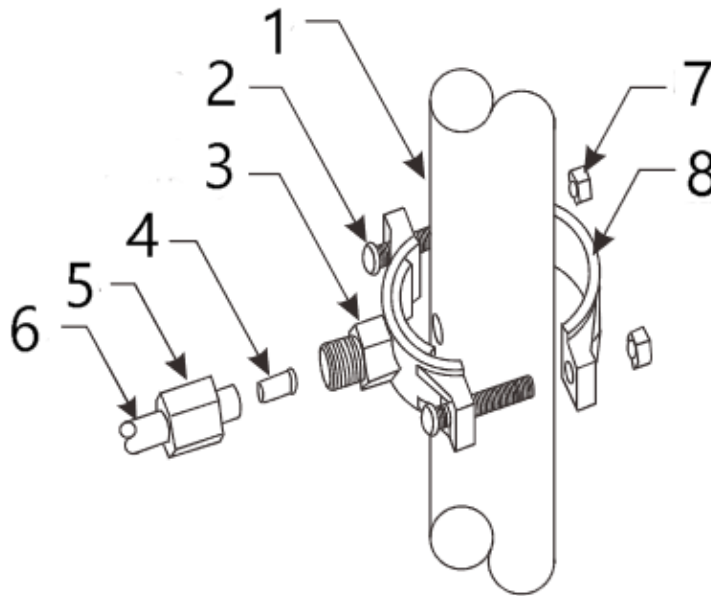
- Place the wastewater clamp on the drainpipe above the siphon and tighten it.
- Using the wastewater clamp as a guide, drill a 6 mm hole that is sufficient to pass the 1/4" hose through one side of the drainpipe. Do not drill through both sides.
- Connect the red wastewater hose from the device to the wastewater clamp.

#### **Attention!**

- Cut the pipes cleanly and at right angles. Otherwise, poor connections and potential leaks may occur.
- The lowest point of the pipe should be the connection point at the wastewater clamp. The pipe should not sag, as this can cause excessive noise when the wastewater flows to the drain.



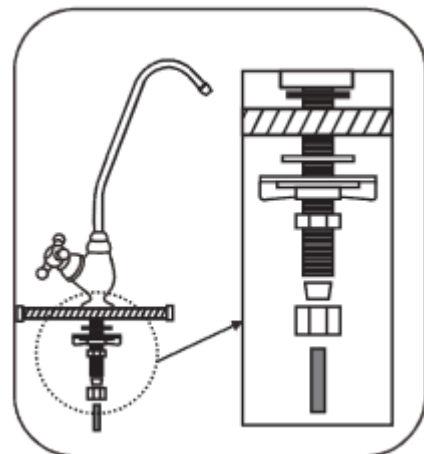
## Wastewater clamp assembly



No	Name/description	No	Name/description
1	Drainpipe	5	Union nut
2	Screw M6×35	6	Drainpipe
3	Wastewater clamp front wall	7	M6 nut
4	Insert	8	Wastewater clamp back wall

## Faucet installation

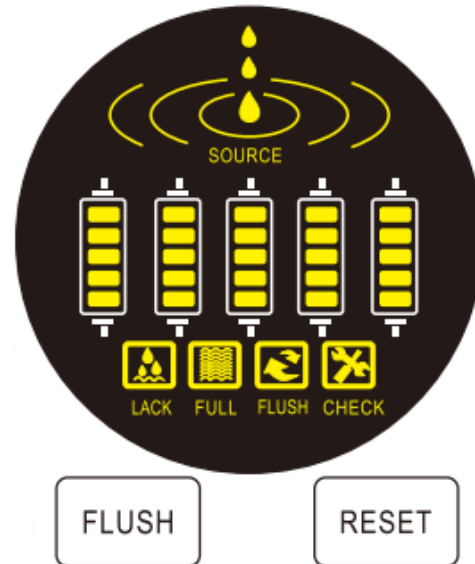
- Select a suitable location near your sink for the faucet.
- Drill a hole with a diameter of 12 mm in the countertop.
- Install washers, plates, gaskets, and nuts in the order shown in the diagram and tighten them on the countertop.
- Attach the blue pure water hose to the bottom of the faucet and connect the hose to the device.
- Install the faucet at the desired location according to the diagram, either on the left or right side, depending on the faucet.



## Operation and maintenance

### LED display and control panel

- When turning on, the light will flash brightly, the buzzer will sound once, the screen will blink once, and the system will start working. During the automatic flushing, which lasts 60 s, the flushing symbol (Flush) will blink.
- The device is in water production mode when the water production symbol (Source) is displayed. Once the pressure tank is full, the water production symbol will turn off and the full pressure tank symbol (Full) will light up.
- In case of water shortage or insufficient water pressure, the water shortage symbol (Lack) will light up and the buzzer will sound 10 times.
- The machine produces water for 2 hours without flushing during operation. It will automatically flush for 30 s.
- If the machine operates for 6 hours or a leakage probe is detected, the machine will automatically stop water production, the repair symbol (Check) will blink, and the buzzer will sound.



### Filter replacement reminder

- Filter stage 1: after 270 hours
- Filter stage 2 and 3: after 540 hours
- Filter stage 4: after 1620 hours
- Filter stage 5: after 810 hours

Reminder for each filter: When there is increased water consumption and decreased filter performance, the set alarm will sound, and the display will blink. After replacing the filter, press the reset button to reset the filter recognition.

### Filter reset

1. Briefly press the reset button for less than 3 s. The buzzer will sound once.
2. Briefly press the reset button again until the required filter for reset is selected.
3. Press the reset button for more than 3 s. After three seconds, a signal tone will sound, indicating a successful filter reset.
4. After the signal tone, press the reset button again. After 5 s without interaction, the filter reset will automatically exit.

### Flushing

- Press the flush button until the buzzer sounds once. The flushing mode will begin.
- Press the flush button in flushing mode to end the program.
- Press the flush button when water is being produced or the water level is full and flush the reverse osmosis membrane for 120 s.



### *Flushing the prefilters (first installation, before installing the reverse osmosis element)*

Prepare the system for operation by flushing the prefilters:

1. Disconnect the inlet hose of the reverse osmosis element from the element housing cap. Open the water line and inlet valve and let the system run through the 3 prefilters.
2. Direct the output water into a container or drain.
3. Continue flushing until the output water is visibly clean. Reconnect the hose.
4. **Note:** The pump and membrane can be severely damaged if the system is not flushed through the prefilters. Discard all water from the flushing process as it is not suitable for use or consumption.
5. After flushing the prefilters, connect and open all valves.
6. Wait about 2 min before opening the faucet.
7. Allow the system to flush for the first 10–15 min with the faucet open. Do not use any water from the reverse osmosis device at this time.

### *Flushing the pressure tank*

1. After flushing the prefilters, operate the device and let the pressure tank fill.
2. It takes approximately 45 min for the tank to fill. Once the tank is full, drain the pressure tank by leaving the faucet open.
3. Once the tank is completely empty, close the faucet and let the tank fill again.
4. After flushing the pressure tank, the device is ready for use.

### **Regular operation**

Once the system is set up and connected to a power source, it will automatically start water treatment when the faucet is opened. When the faucet is closed, the device will automatically shut off. After use, the device will automatically flush if it is equipped with an automatic flushing function.

### **Filter maintenance**

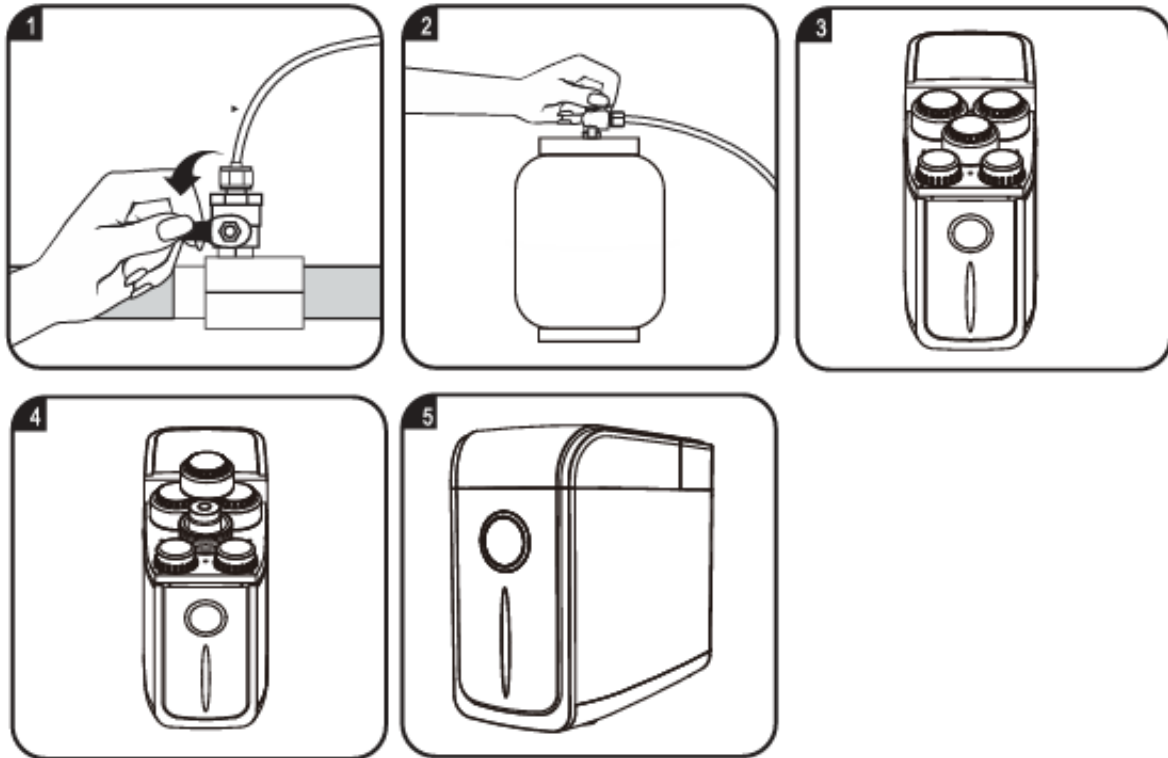
To ensure optimal operation of the device, regular maintenance is required. The frequency of maintenance depends on the quality of the raw water and the intensity of system use. Here are some guidelines for scheduled filter replacements, though the frequency of filter changes may vary. If unsure, please contact a service technician.

1. Replace the PP filter every 3–6 months or as needed.
2. Replace the carbon block filter every 6–12 months or as needed.
3. Replace the reverse osmosis membrane every 18–24 months or as needed.
4. Replace the inline carbon filter every 6–12 months or as needed.

If you are away for an extended period or will not be using the device for a long time, disconnect the device from the power source. When the device has been shut down and not used for an extended period, perform the same flushing procedure as during initial start-up.

## Filter and membrane replacement

1. Close the inlet valve for the raw water.
2. Close the ball valve of the pressure tank.
3. Open the faucet and drain the remaining water from the system.
4. Open the cover of the N03 unit and then the cover of the filter housing.
5. Insert the filters and membrane into their respective housings.



**Attention!** The replacement schedule for filters and membranes is for reference only. The actual replacement schedule may vary depending on usage and the quality of the raw water. Consult your local dealer for further details on the replacement schedule.



## Troubleshooting

Problem	Possible cause	Suggested solution
No water production	Water supply turned off	Turn on feed water.
Not enough water production	Water supply blocked	Remove blocking.
	Feed water valve clogged	Open or unclog valve.
	No drain	Clean or replace check valve.
Pump not running	Low feed water pressure	Check source water supply.
	No power supply or loose connection	Turn on power supply, check connection.
	Transformer burned out	Replace transformer.
Pump is running, but system is not producing water	Prefilter clogged	Replace filter cartridges.
	Inlet solenoid valve not functioning	Repair or replace valve.
System does not switch off	High-pressure switch not operating	Repair or replace switch.
Abnormal pump noise	Prefilter clogged	Replace filter cartridges.
	Low feed water pressure	Adjust feed water pressure.
No discharge water	Drain flow restrictor clogged	Replace drain flow restrictor.
Produced water has a bad taste	Post/line filter needs replacement	Replace filter cartridges.
Hoses leaking	Incorrect hose connection	Check/reposition hoses.
	Defective or damaged hoses	Replace hose section.

## Disposal regulations

EU guidelines regarding the disposal of scrap electric appliances (WEEE, 2012/19/EU) were implemented in the law related to electrical and electronic equipment and appliances.

All WiTec electric devices that fall under the WEEE regulations are labelled with the crossed-out wheeled waste bin logo. This logo indicates that this electric equipment must not be disposed with the domestic waste.

The company WiTec Technik GmbH has been registered in the German registry EAR under the WEEE-registration number DE45283704.

Disposal of used electrical and electronic appliances (intended for use in the countries of the European Union and other European countries with a separate collection system for these appliances).

The logo on the article or on its packaging points out that this article must not be treated as normal household waste but must be disposed to a recycling collection point for electronic and electrical waste equipment. By contributing to the correct disposal of this article you protect the environment and the health of your fellow men. Environment and health are threatened by inappropriate disposal.



Material recycling helps reduce the consumption of raw materials.

Additional information on recycling this article can be provided by your local community, municipal waste disposal facilities, or the store where you purchased the article.

Address:  
WiTec Wildanger Technik GmbH  
Königsbenden 12 / 28  
D-52249 Eschweiler

Important notice:

The reprint or reproduction, even of excerpts, and any commercial use, even in part, of this instruction manual require the written permission of WiTec Wildanger Technik GmbH.