

# User's manual

## Oil Bath Reduction

92731, 92732

# wiltec



Illustration similar, may vary depending on model

Please read and follow the operating instructions and safety information prior to initial operation.

Technical changes reserved!

Illustrations, functional steps, and technical data may deviate insignificantly due to continuous further developments.



The information contained in this document may alter at any time without prior notice. No part of this document may be copied or otherwise duplicated without prior written consent. All rights reserved.

WilTec Wildanger Technik GmbH cannot be held liable for any possible mistakes in this operating manual, nor in the diagrams and illustrations shown.

Although WilTec Wildanger Technik GmbH has made every possible effort to ensure that this operating manual is complete, accurate, and up-to-date, errors cannot be ruled out entirely.

If you have found an error or wish to suggest an improvement, we look forward to hearing from you.

Send us an e-mail to:

[service@wiltec.info](mailto:service@wiltec.info)

or use our contact form:

<https://www.wiltec.de/contacts/>

The most recent version of this manual in several languages can be found in our online shop:

<https://www.wiltec.de/docsearch>

Our postal address is:

WilTec Wildanger Technik GmbH  
Königsbenden 12  
52249 Eschweiler Germany

To return your goods for exchange, repair, or other purposes, please use the following address. Attention! To allow for a trouble-free complaint or return, it is important to contact our customer service team before returning your goods.

Retourenabteilung  
WilTec Wildanger Technik GmbH  
Königsbenden 28  
52249 Eschweiler Germany

E-mail: **service@wiltec.info**

Tel: +49 2403 55592-0

Fax: +49 2403 55592-15



## Introduction

Thank you for choosing to purchase this quality product. To minimise the risk of injury, we ask you to always take some basic safety precautions when using this product. Please read this operating manual carefully and make sure that you understand it.

Keep these operation instructions in a safe place.

The oil bath reduction is suitable for kart racing and nearly every other small petrol engine such as pumps, lawn mowers, sickle bar mowers, generators, karts, go-karts, vibrating plates, and many more. With the dimensions of the crankshaft being appropriate, the centrifugal clutch can be replaced without any problem.

## Safety instructions and information

### Attention!

- We hereby declare that this reduction is designed to be installed inside a machine. The machine to be equipped with it must not be operated until confirmation of correspondence of this with the Machinery Directive.
- We cannot be held responsible for any damage caused by non-respect of this note. The manufacturer declines any reliability for damages, as he cannot influence installation, use, and safety of the machine.

### **Read the following safety instructions carefully and obey all information and instructions contained.**

- Before installing the reduction, compare the dimensions of the shaft of your engine to the input dimensions of the shaft of the oil bath reduction, making sure that they match.
- The oil bath reduction is only suitable for use in small petrol engines.
- After installing the oil bath reduction, make sure that all parts are fixed.
- Use the same engine oil (15 W40) for the oil bath reduction that you use for your engine.
- This device may only be used by persons with reduced physical, sensory, or mental abilities or a lack of experience or knowledge in case a person familiar with the device and responsible for their safety has instructed and supervises them.
- Children must not use the device and should be supervised when they are near it to ensure that they do not play with it.
- The device comes without operation fluids. Before commissioning, fill in oil.
- Make sure that engines are only operated in well ventilated zones; exhaust fumes are harmful.
- Only operate an engine with uttermost care. Exhaust pipes must be free of covering, clogging, or blocking objects of any kind.
- Switch the device off before adding fuel.
- The tank must not be filled to overflowing.
- In case fuel is spilled onto the casing of the device during filling, it must be removed before starting the engine.
- When changing oil, make sure that the tank is firmly closed.
- Do not operate the device near open flames, flammable or explosive materials or gases, and flying sparks.
- With the engine working, certain components can become very hot. Therefore, avoid touching those components; there is a risk of burns.
- Only operate the engine on a level, solid surface. Inclined surfaces can cause fuel spills.
- When transporting the engine, make sure that no fuel can escape. If possible, empty the tank before transporting the engine.

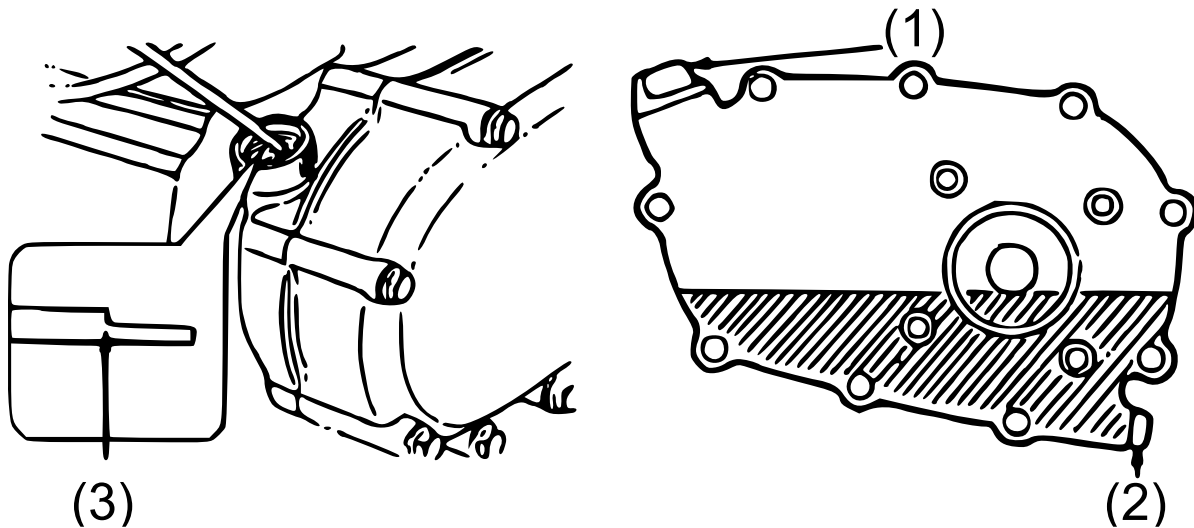
### Attention!

- **Operating the reduction without sufficient oil can seriously damage the engine and reduction!**
- **To mount the oil bath reduction, it must be opened beforehand.**

### Oil level control

Check the oil level following the figure and in the following order:

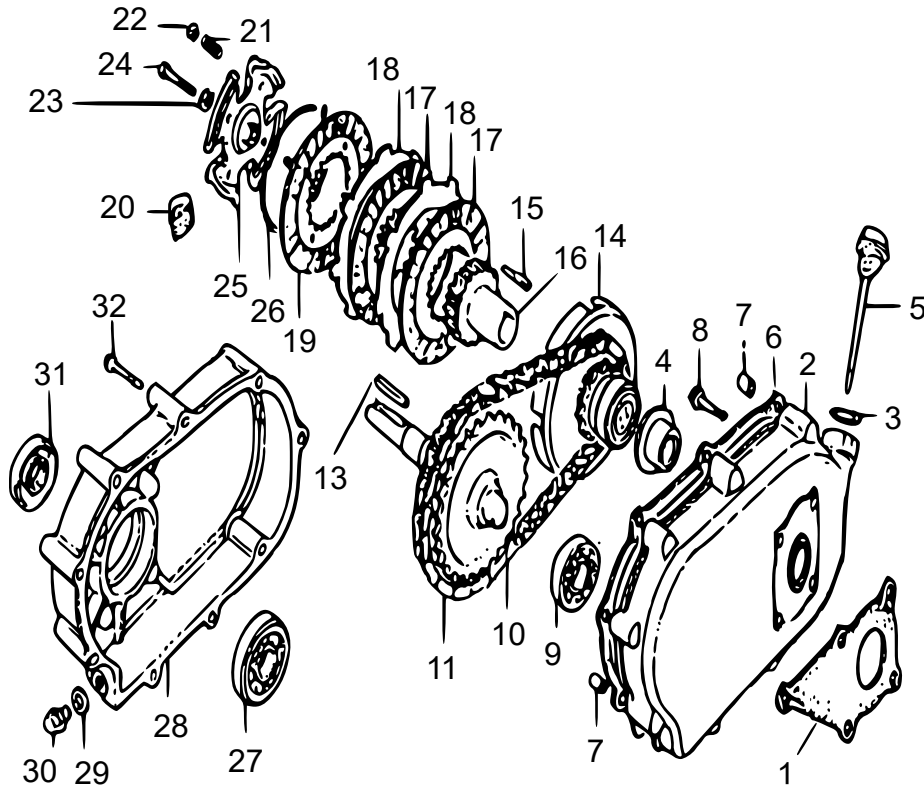
1. Remove and clean the oil level gauge.
2. Re-place the oil level gauge without screwing it in. Remove it again and check the oil level.
3. In case the oil level is too low, add recommended engine oil (15 W40) up to the upper fill level mark.
4. Re-screw the oil level gauge completely in.



Oil capacity: 0.5 l

Nº	Name	Nº	Name
1	Oil level gauge	3	Upper fill level mark
2	Drain plug		

Exploded view and parts list



No	Name	Qty.	No	Name	Qty.
1	Left cover gasket	1	18	Central disk of reduction	2
2	Reducer	1	19	Pressure disc	1
3	Sealing ring	1	20	Reduction weight	1
4	Spacer	1	21	Spring	1
5	Oil level gauge	1	22	Support	1
6	Reducer housing gasket	1	23	Spring washer	1
7	ø8×12 Socket pin	2	24	Bolt M8×35	1
8	Bolt M8×22	1	25	Reduction end piece	1
9	Ball bearing 6205	1	26	Stop ring	1
10	Driving shaft	1	27	Ball bearing 6206	1
11	Chain	1	28	Reducer housing cover	1
13	Parallel key	2	29	Drain plug washer	1
14	Housing	1	30	Drain plug	1
15	Parallel key	1	31	Driving shaft oil gasket	1
16	Reductor guide	1	32	Bolt M6×55	1
17	Reduction friction disk	2			

Important Note:

Reproduction and any commercial use (of parts) of this operating manual, requires a written permission of WilTec Wildanger Technik GmbH.